

2025



TeamSport-iD.com



WE ARE TEAM



VfB STUTTGART
Bundesliga



1. FSV MAINZ 05
Bundesliga



SC PREUSSEN MÜNSTER
2. Bundesliga



SG DYNAMO DRESDEN
3. Liga



ROT-WEISS ESSEN
3. Liga



1. FC TURBINE POTSDAM
Frauen Bundesliga



SCR ALTACH
Admiral Bundesliga



ROYAL ANTWERP FC
Jupiler Pro League



FC RIGA
Virsliga



PFC LUDOGORETS RAZGRAD
Parva Liga



AUGSBURGER PANTHER
Penny German Icehockey League



SCHWENNINGER
WILD WINGS
Penny German Icehockey League



GRIZZLYS
WOLFSBURG
Penny German Icehockey League



TANZSPORT
DEUTSCHLAND
DTV
GERMAN DANCESPORT
ASSOCIATION



STV
FSG
SWISS GYMNASTICS
FEDERATION

**OUR TEAM FOR
A BETTER WORLD!**

Would you like to find out
more about our current
projects and goals for the
upcoming years?

Then scan the
QR code now!



RE use.
RE cycle.
RE peat.

DESIGN PRODUCTS SUSTAINABLE

More than
82 %
organic cotton



Organic cotton does not use synthetic chemical pesticides or genetically modified plants. This reduces the impact on soil, water and air.

Approx. **40 %**
Recycled polyester



Most of our textiles are made from polyester as it's ideal for sporting activities thanks to its functional properties. In order to make textile production even more sustainable, we have been increasingly using recycled polyester since 2020. In addition to new teamlines, popular articles such as the jersey Team or the shorts Manchester 2.0 are now made from recycled polyester.

WE WANT TO CLOSE THE CYCLE

In the last few years, we have already intensively worked on recycled polyester. In 2022, we launched a recycling project to collect worn textiles in Europe and return them to the textile cycle. Together with partners and clubs, we collected discarded sportswear for the first time. A thermomechanical process was applied to create polyester granulate, which was used to produce new yarn and consequently a new jersey in 2023.

We now want to improve this cycle and are therefore testing a new recycling process. With the support of our retailers and partner clubs, we are once again collecting textiles that will be chemically recycled. The result is going to be the jersey LOOP, which combines important product features with a transparent recycling process. We are determined to contribute to creating sustainable solutions. True to the motto: **Our Team for a better World.**





DYNAMIC



ICONIC



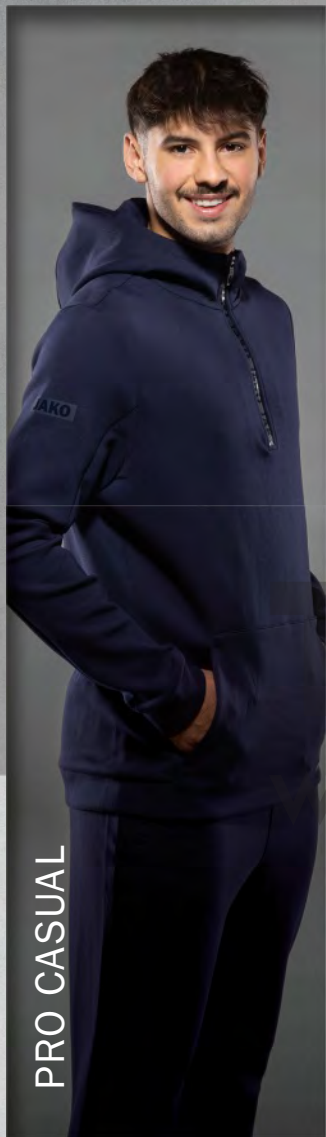
POWER



PERFORMANCE



CLASSICO



PRO CASUAL



PREMIUM BASICS



BASE

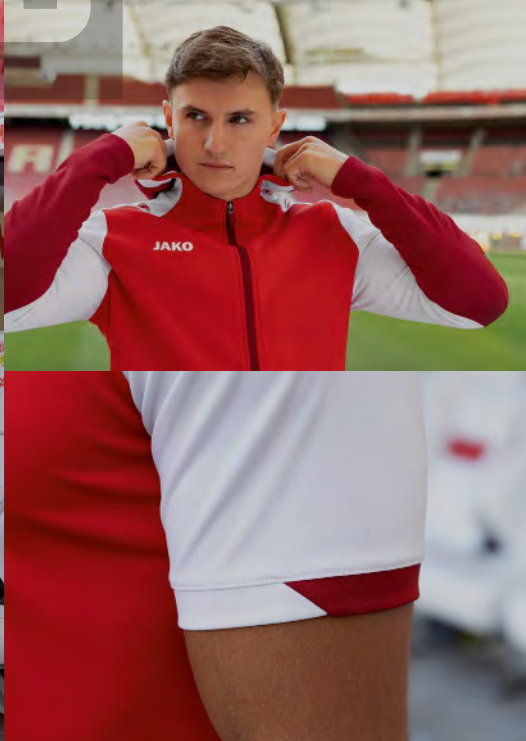
TEAMLINES

OVERVIEW RUNNING TIMES

| | |
|----------------|------|
| DYNAMIC | 2028 |
| ICONIC | 2027 |
| PRO CASUAL | 2027 |
| POWER | 2026 |
| BASE | 2026 |
| PERFORMANCE | 2025 |
| CLASSICO | 2025 |
| PREMIUM BASICS | 2025 |



AVAILABLE UNTIL
2028





T E A M L I N E

www.TeamSports.com
DYNAMIC





TEAMSPORT-ID

www.TeamSport-ID.com

026

114

305

204

405

837



COLOURS

- 026** white/coral/seablue
- 114** red/white/dark red
- 204** green/white/dark green
- 305** yellow/white/black
- 405** royal/white/seablue
- 431** sky blue/white/seablue
- 826** black/white/anthracite
- 837** light grey/white/grey
- 915** seablue/white/mint
- 921** night blue/white/light grey

431

915

826

921



800



026

900



114

800



204

800



305

800



405

900



Back view



431

900



826

800



837

800



915

900



921

900

NEW
03|2025

6870 - HOODED JACKET DYNAMIC

Polyester interlock fleece, 100 % polyester (recycled)



Hood and sleeves in contrast | Side pockets with zip



116, 128, 140, 152, 164
S, M, L, XL, XXL, 3XL, 4XL

6870D - WOMEN SIZES

S, M, L, XL

026 white/coral/seablue, **114** red/white/dark red,
204 green/white/dark green, **305** yellow/white/black,
405 royal/white/seablue, **431** sky blue/white/seablue,
826 black/white/anthracite, **837** light grey/white/grey,
915 seablue/white/mint, **921** night blue/white/light grey

NEW
03|2025

6670 - LEISURE TROUSERS DYNAMIC

Polyester interlock, 100 % polyester (recycled)



Side pockets with zip | Elastic hem



116, 128, 140, 152, 164
S, M, L, XL, XXL, 3XL

6670D - WOMEN SIZES

S, M, L, XL

800 black, **900** seablue



800



Side view



900

NEW
03/2025

8370 - LEISURE SHORTS DYNAMIC

Polyester interlock, 100 % polyester (recycled)



Side pockets with zip

116, 128, 140, 152, 164
S, M, L, XL, XXL, 3XL



8370D - WOMEN SIZES

S, M, L, XL

800 black, **900** seablue



114



800



026



900



114



800



204



800



305



800



405



900



Back view



431



900



826



800



837



800



915



900



921



900

NEW
03|2025

9870 - WOVEN JACKET DYNAMIC

Stretch micro twill, 100 % polyester (recycled)

Lining: 100 % polyester (recycled)

Collar and sleeves in contrast |

Side pockets with zip



XS, S, M, L, XL, XXL, 3XL, 4XL

026 white/coral/seablu, **114** red/white/dark red,
204 green/white/dark green, **305** yellow/white/black,
405 royal/white/seablu, **431** sky blue/white/seablu,
826 black/white/anthracite, **837** light grey/white/grey,
915 seablu/white/mint, **921** night blue/white/light grey

NEW
03|2025

6570 - WOVEN TROUSERS DYNAMIC

Stretch micro twill, 100 % polyester (recycled)

Elastic material without lining |

Side pockets with zip | Elastic hem

S, M, L, XL, XXL, 3XL, 4XL



6570D - WOMEN SIZES

S, M, L, XL

800 black, **900** seablu



800



Side view



900

SPORT-ID
Sport-ID.com

NEW
03/2025

6270 - WOVEN SHORTS DYNAMIC

Stretch micro twill, 100 % polyester (recycled)



Elastic material without lining | Side pockets | Two-part elastic waistband with drawcord

S, M, L, XL, XXL, 3XL, 4XL



6270D - WOMEN SIZES

S, M, L, XL

800 black, 900 seablue



114



026



114



204



305



405



900



800



800



800



900



431



826



837



915



921



Back view



900



800



800



900



900



800

NEW
03/2025

9370 - POLYESTER JACKET DYNAMIC

Polyester piquet, 100 % polyester (recycled)



Collar and sleeves in contrast | Side pockets with zip



116, 128, 140, 152, 164
S, M, L, XL, XXL, 3XL, 4XL

9370D - WOMEN SIZES

S, M, L, XL

026 white/coral/seablu, **114** red/white/dark red,
204 green/white/dark green, **305** yellow/white/black,
405 royal/white/seablu, **431** sky blue/white/seablu,
826 black/white/anthracite, **837** light grey/white/grey,
915 seablu/white/mint, **921** night blue/white/light grey

NEW
03/2025

9270 - POLYESTER TROUSERS DYNAMIC

Polyester piquet, 100 % polyester (recycled)



Side pockets | Hem with zip | Elastic hem



116, 128, 140, 152, 164
S, M, L, XL, XXL, 3XL, 4XL

9270D - WOMEN SIZES

S, M, L, XL

800 black, **900** seablu



Back view



026

204

305

405

431

826

837

915

921

NEW
03|2025

6370 - POLO DYNAMIC

Polyester mini piquet, 100 % polyester (recycled)

Contrasting details on collar and sleeve ending



140, 152, 164

S, M, L, XL, XXL, 3XL, 4XL



6370D - WOMEN SIZES

S, M, L, XL

026 white/coral/seablue, **114** red/white/dark red,
204 green/white/dark green, **305** yellow/white/black,
405 royal/white/seablue, **431** sky blue/white/seablue,
826 black/white/anthracite, **837** light grey/white/grey,
915 sea blue/white/mint, **921** night blue/white/light grey



NEW
03/2025

8670 - ZIP TOP DYNAMIC

Polyester double knit mesh, 100 % polyester (recycled)

Sleeve: 90 % polyester (recycled), 10 % elastane

Collar and sleeves in contrast | Sleeve made of highly elastic polyester elastane mix



116, 128, 140, 152, 164
S, M, L, XL, XXL, 3XL

8670D - WOMEN SIZES

S, M, L, XL

026 white/coral/seablue, **114** red/white/dark red, **204** green/white/dark green, **305** yellow/white/black, **405** royal/white/seablue, **431** sky blue/white/seablue, **826** black/white/anthracite, **837** light grey/white/grey, **915** seablue/white/mint, **921** night blue/white/light grey

NEW
03/2025

8870 - LONGSLEEVE DYNAMIC

Polyester eyelet, 100 % polyester (recycled)

Collar and sleeves in contrast

116, 128, 140, 152, 164
S, M, L, XL, XXL, 3XL



026 white/coral/seablue, **114** red/white/dark red, **204** green/white/dark green, **305** yellow/white/black, **405** royal/white/seablue, **431** sky blue/white/seablue, **826** black/white/seablue, **837** light grey/white/grey, **915** seablue/white/mint, **921** night blue/white/light grey



900

NEW
03|2025

8470 - TRAINING TROUSERS DYNAMIC

Stretch knit polyester, 90 % polyester (recycled), 10 % elastane

Two-part elastic waistband with drawcord

116, 128, 140, 152, 164

S, M, L, XL, XXL, 3XL



8470D - WOMEN SIZES

S, M, L, XL

800 black, **900** seablue

114



Back view



800



Side view



026

204

305

405

431

826

837

915

921



900

NEW
03/2025**6170 - T-SHIRT DYNAMIC**

Polyester mini piquet, 100 % polyester (recycled)

Contrasting details on collar and sleeve ending



116, 128, 140, 152, 164

S, M, L, XL, XXL, 3XL, 4XL

**6170D - WOMEN SIZES**

S, M, L, XL

026 white/coral/seablue, **114** red/white/dark red,
204 green/white/dark green, **305** yellow/white/black,
405 royal/white/seablue, **431** sky blue/white/seablue,
826 black/white/anthracite, **837** light grey/white/grey,
915 seablue/white/mint, **921** night blue/white/light grey

NEW
03/2025**8570 - TRAINING SHORTS DYNAMIC**

Polyester piquet, 100 % polyester (recycled)

Two-part elastic waistband with drawcord



116, 128, 140, 152, 164

S, M, L, XL, XXL, 3XL

**8570D - WOMEN SIZES**

S, M, L, XL

800 black, **900** seablue



114



Back view



026

204

305

405

431

826

837

915

921

NEW
03|2025

6770 - ZIP HOODIE DYNAMIC

Polyester interlock, 100 % polyester (recycled)

Hood and sleeves in contrast | Attached pocket



128, 140, 152, 164

S, M, L, XL, XXL, 3XL



026 white/coral/seablue, **114** red/white/dark red,
204 green/white/dark green, **305** yellow/white/black,
405 royal/white/seablue, **431** sky blue/white/seablue,
826 black/white/anthracite, **837** light grey/white/grey,
915 seablue/white/mint, **921** night blue/white/light grey



800

919

NEW
04|2025

6005 - TANK TOP UNI

Polyester mini piquet, 100 % polyester (recycled)

Back made of mesh | Tonal logo print



S, M, L, XL, XXL



6005D - WOMEN SIZES

S, M, L

522 light grey, 800 black, 919 night blue



000 400 522 800 830 900 919



000 400 522 800 830 900 919

NEW 6105 - T-SHIRT UNI

04|2025 Polyester mini piquet, 100 % polyester (recycled)

Back made of mesh | Tonal logo print

S, M, L, XL, XXL, 3XL, 4XL

6105D - WOMEN SIZES

S, M, L, XL

000 white, 100 red, 400 royal, 522 light grey,
800 black, 830 anthracite, 900 seablue, 919 night blue



NEW 6305 - POLO UNI

04|2025 Polyester piquet, 100 % polyester (recycled)

Tonal logo print

S, M, L, XL, XXL, 3XL, 4XL

6305D - WOMEN SIZES

S, M, L, XL

000 white, 100 red, 400 royal, 522 light grey,
800 black, 830 anthracite, 900 seablue, 919 night blue





AVAILABLE UNTIL
2027





T E A M L I N E

ICONIC





016

103

222

403

801

807

808



COLOURS

016 white/soft grey/anthra light

103 red/wine red

222 soft green/sport green

403 royal/seablue

801 black/anthracite

807 black/neon orange

808 black/soft yellow

851 soft grey/dusky pink/anthra light

852 anthra light/mint green/soft grey

901 seablue/chili red

914 seablue/JAKO blue/neon yellow

851

852

901

914



6824 - HOODED JACKET ICONIC

Bonded polyester fleece, 100 % polyester (recycled)
Jacquard insert | Side pockets with zip



128, 140, 152, 164
S, M, L, XL, XXL, 3XL, 4XL
34, 36, 38, 40, 42, 44

016 white/soft grey/antra light, **103** red/wine red,
222 soft green/sport green, **403** royal/seablue,
801 black/anthracite, **807** black/neon orange,
808 black/soft yellow, **851** soft grey/dusky pink/antra light,
852 antra light/mint green/soft grey, **901** seablue/chili red,
914 seablue/JAKO blue/neon yellow



6523 - LEISURE TROUSERS POWER

Stretch micro twill, 100 % polyester (recycled)

Side insert in honeycomb structure | Elastic material without lining | Side pockets | Additional side pocket with concealed zip | Hem with elastic insert | Elastic waistband with drawcord and JAKO branding | Modern cut in ankle length for adult sizes



128, 140, 152, 164
S, M, L, XL, XXL, 3XL, 4XL
34, 36, 38, 40, 42, 44

000 white, **105** red/white, **800** black,
802 black/white, **820** antra light, **900** seablue



103



Back view



016

222

403

801

807

808

852

901

914



KEEP DRY

6324 - POLO ICONIC

Polyester micro mesh, 100 % polyester (recycled)
Jacquard insert



FAIR

S, M, L, XL, XXL, 3XL, 4XL

016 white/soft grey/antra light, **103** red/wine red,
222 soft green/sport green, **403** royal/seablue,
801 black/antracite, **807** black/neon orange,
808 black/soft yellow, **852** antra light/mint green/soft grey,
901 seablue/chili red, **914** seablue/JAKO blue/neon yellow



103

802



016

000



103

802



222

802



403

900



801

802



807

802



808

802



852

820



901

900



914

900



Back view



9324 - POLYESTER JACKET ICONIC

Matt polyester tricot, 100 % polyester (recycled)
Jacquard insert | Side pockets with zip

116, 128, 140, 152, 164
S, M, L, XL, XXL, 3XL, 4XL

016 white/soft grey/antra light, **103** red/wine red,
222 soft green/sport green, **403** royal/seablue,
801 black/anthracite, **807** black/neon orange,
808 black/soft yellow, **852** anthra light/mint green/soft grey,
901 seablue/chili red, **914** seablue/JAKO blue/neon yellow



9223 - POLYESTER TROUSERS POWER

Matt polyester tricot, 100 % polyester (recycled)
Calf insert: 90 % polyester (recycled), 10 % elastane
Side insert in honeycomb structure | Side pockets with zip | Elastic insert in the calf area | Hem with zip | Two-part elastic waistband with drawcord | Conical cut | Modern cut in ankle length for adult sizes

116, 128, 140, 152, 164
S, M, L, XL, XXL, 3XL, 4XL
34, 36, 38, 40, 42, 44

000 white, **105** red/white, **800** black,
802 black/white, **820** anthra light, **900** seablue



103



Back view



016

222

403

801

807

808

851

852

901

914



6124 - T-SHIRT ICONIC

Polyester micro mesh, 100 % polyester (recycled)

Jacquard insert | Collar with ribbed insert



116, 128, 140, 152, 164

S, M, L, XL, XXL, 3XL, 4XL

34, 36, 38, 40, 42, 44

016 white/soft grey/antra light, **103** red/wine red,

222 soft green/sport green, **403** royal/seablue,

801 black/antracite, **807** black/neon orange,

808 black/soft yellow, **851** soft grey/dusky pink/antra light,

852 antra light/mint green/soft grey, **901** seablue/chili red,

914 seablue/JAKO blue/neon yellow



8624 - ZIP TOP ICONIC

Polyester stretch fleece, 100 % polyester (recycled)
 Sleeve: 90 % polyester (recycled), 10 % elastane

Jacquard insert | Body with soft fleece inside |
 Sleeve made of highly elastic polyester elastane mix

128, 140, 152, 164
 S, M, L, XL, XXL, 3XL

016 white/soft grey/antra light, **103** red/wine red,
222 soft green/sport green, **403** royal/seablu,
801 black/anthracite, **807** black/neon orange,
808 black/soft yellow, **852** antra light/mint green/soft grey,
901 seablu/chili red, **914** seablu/JAKO blue/neon yellow



8824 - SWEATER ICONIC

Polyester stretch fleece, 100 % polyester (recycled)
Sleeve: 90 % polyester (recycled), 10 % elastane



Jacquard insert | Body with soft fleece inside |
Sleeve made of highly elastic polyester elastane mix

116, 128, 140, 152, 164
S, M, L, XL, XXL

016 white/soft grey/antra light, **103** red/wine red,
222 soft green/sport green, **403** royal/seablue,
801 black/anthracite, **807** black/neon orange,
808 black/soft yellow, **852** antra light/mint green/soft grey,
901 seablue/chili red, **914** seablue/JAKO blue/neon yellow



8423 - TRAINING TROUSERS POWER

Stretch knit polyester, 90 % polyester (recycled), 10 % elastane

Side insert in honeycomb structure | Side pockets with zip |
Hem with zip | Two-part elastic waistband with drawcord |
Modern cut in ankle length for adult sizes



116, 128, 140, 152, 164
S, M, L, XL, XXL, 3XL

000 white, **105** red/white, **800** black,
802 black/white, **820** antra light, **900** seablue



6223 - SHORTS POWER

Polyester interlock, 100 % polyester (recycled)

Side insert in honeycomb structure | Extra deep side pockets (appropriate for tennis balls) |



Two-part elastic waistband with drawcord

128, 140, 152, 164
S, M, L, XL, XXL, 3XL, 4XL
34, 36, 38, 40, 42, 44

000 white, **100** red, **800** black, **802** black/white, **820** anthra light, **900** seablue



8376D - TIGHT POWER WOMEN

Polyester stretch jersey
82 % polyester (recycled), 18 % elastane



Side slip pocket | Lateral insert in
honeycomb structure | Comfortable,
extra wide waistband with key pocket

34, 36, 38, 40, 42, 44

237 mint green, **522** light grey, **800** black,
802 black/white, **900** seablue

| Men's and kids' sizes see p. 261



6776D - CAPRI TIGHT POWER WOMEN

Polyester stretch jersey
82 % polyester (recycled), 18 % elastane



Side slip pocket | Lateral insert in
honeycomb structure | Comfortable,
extra wide waistband with key pocket

34, 36, 38, 40, 42, 44

237 mint green, **800** black, **900** seablue

| Men's and kids' sizes see p. 260



8576D - SHORT TIGHT POWER WOMEN

Polyester stretch jersey
82 % polyester (recycled), 18 % elastane

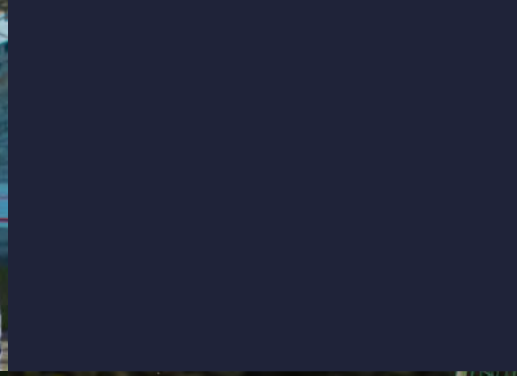


Side slip pocket | Comfortable, extra
wide waistband with key pocket

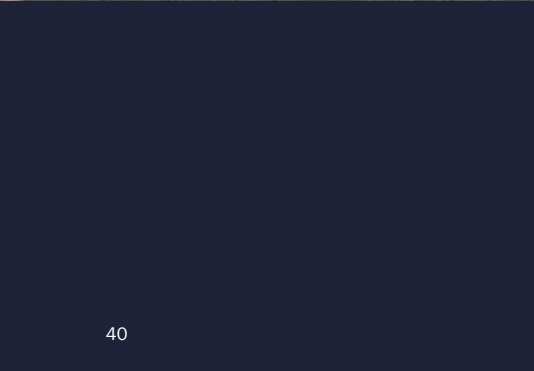
34, 36, 38, 40, 42, 44

237 mint green, **800** black, **900** seablue

| Men's and kids' sizes see p. 260



AVAILABLE UNTIL
2026





T E A M L I N E

POWER



TeamSport
www.TeamSportID.com

KO



000



004



100



200



375



400



304





COLOURS

- 000** white
- 004** white/red
- 100** red
- 200** sport green
- 375** flame/seablue
- 400** royal
- 404** royal/citro
- 304** citro/royal
- 800** black
- 803** black/citro
- 840** stone grey
- 900** seablue
- 910** seablue/sky blue

800

803

840

900

910



000 100 200 400 800 840



6123 - T-SHIRT POWER

Single jersey, 70 % cotton (organic), 30 % polyester (recycled)
 Contrast insert in honeycomb structure | Cotton from controlled organic cultivation | Pre-shrunk

128, 140, 152, 164
 S, M, L, XL, XXL, 3XL, 4XL
 34, 36, 38, 40, 42, 44

000 white, **100** red, **200** sport green, **400** royal,
800 black, **840** stone grey, **900** seablu



Back view



Back view



000 100 200 400 800 840



000 100 200 400 800 840



6323 - POLO POWER

Single jersey, 70 % cotton (organic), 30 % polyester (recycled)

Contrast insert in honeycomb structure | Cotton from controlled organic cultivation | Pre-shrunk | Side seam slit

140, 152, 164
S, M, L, XL, XXL, 3XL, 4XL
34, 36, 38, 40, 42, 44

000 white, **100** red, **200** sport green, **400** royal,
800 black, **840** stone grey, **900** seablue



6723 - HOODED SWEATER POWER

Cotton polyester interlock, 70 % cotton (organic), 30 % polyester (recycled)

Contrast insert in honeycomb structure | Cotton from controlled organic cultivation | Pre-shrunk | Attached pocket | Hood with drawcord | Children sizes without cords | Ribbed waistband and cuffs

128, 140, 152, 164
S, M, L, XL, XXL, 3XL, 4XL
34, 36, 38, 40, 42, 44

000 white, **100** red, **200** sport green, **400** royal,
800 black, **840** stone grey, **900** seablue





900

900



000

000



004

105



100

802



200

802



375

900



400

802



Back view



404

900



800

802



803

800



840

802



900

900



910

900



6823 - HOODED JACKET POWER

Bonded polyester fleece, 100 % polyester

Contrast insert in honeycomb structure | Side pockets with zip

128, 140, 152, 164
S, M, L, XL, XXL, 3XL, 4XL
34, 36, 38, 40, 42, 44

000 white, **004** white/red, **100** red, **200** sport green,
375 flame/seablue, **400** royal, **404** royal/citro,
800 black, **803** black/citro, **840** stone grey,
900 seablue, **910** seablue/sky blue



6523 - LEISURE TROUSERS POWER

Stretch micro twill, 100 % polyester (recycled)

Side insert in honeycomb structure | Elastic material without lining | Side pockets | Additional side pocket with concealed zip | Hem with elastic insert | Elastic waistband with drawcord and JAKO branding | Modern cut in ankle length for adult sizes

128, 140, 152, 164
S, M, L, XL, XXL, 3XL, 4XL
34, 36, 38, 40, 42, 44

000 white, **105** red/white, **800** black,
802 black/white, **820** anthra light, **900** seablue



TeamSportID.com



900

900



000

004

100

200

375

400

000

105

802

802

900

802



404

800

803

840

900

910

Back view

900

802

800

802

900

900



9323 - POLYESTER JACKET POWER

Matt polyester tricot, 100 % polyester (recycled)

Contrast insert in honeycomb structure | Side pockets with zip

116, 128, 140, 152, 164
S, M, L, XL, XXL, 3XL, 4XL
34, 36, 38, 40, 42, 44

000 white, **004** white/red, **100** red,
200 sport green, **375** flame/seablue, **400** royal,
404 royal/citro, **800** black, **803** black/citro,
840 stone grey, **900** seablue, **910** seablue/sky blue



9223 - POLYESTER TROUSERS POWER

Matt polyester tricot, 100 % polyester (recycled)

Calf insert: 90 % polyester (recycled), 10 % elastane

Side insert in honeycomb structure | Side pockets with zip | Elastic insert in the calf area | Hem with zip | Two-part elastic waistband with drawcord | Conical cut | Modern cut in ankle length for adult sizes

116, 128, 140, 152, 164
S, M, L, XL, XXL, 3XL, 4XL
34, 36, 38, 40, 42, 44

000 white, **105** red/white, **800** black, **802** black/white,
820 anthra light, **900** seablue



7423 - RAIN JACKET POWER

100 % polyester, 3000 mm lamination/3000 g/m²/24h

Contrast insert on shoulder and sleeve | Wind and water repellent outer material with lamination | Waistband with drawcord and stoppers | Elastic cuffs | Integrated hood in collar | Side pockets with zip

128, 140, 152, 164
S, M, L, XL, XXL, 3XL

100 red, 200 sport green, 400 royal, 800 black, 840 stone grey, 900 seablue



900



Back view



000 004 100 200 304 375 400 800 803 840 910



4223 - T-SHIRT POWER

Polyester interlock, 100 % polyester (recycled)
 Contrast insert in honeycomb structure



116, 128, 140, 152, 164
 S, M, L, XL, XXL, 3XL, 4XL
 34, 36, 38, 40, 42, 44

000 white, **004** white/red, **100** red, **200** sport green,
304 citro/royal, **375** flame/seablue, **400** royal, **800** black,
803 black/citro, **840** stone grey, **900** seablue,
910 seablue/sky blue

| additional colours on p. 160

SHORTS

4423 - Shorts POWER | p. 175



6223 - SHORTS POWER

Polyester interlock, 100 % polyester (recycled)

Side insert in honeycomb structure | Extra deep side pockets (appropriate for tennis balls) |

Two-part elastic waistband with drawcord



128, 140, 152, 164

S, M, L, XL, XXL, 3XL, 4XL

34, 36, 38, 40, 42, 44

000 white, **100** red, **800** black, **802** black/white,
820 anthra light, **900** seablue



900

Back view



000

004

100

200

375

400

404

800

803

840

910



8623 - ZIP TOP POWER

Polyester honeycomb, 100 % polyester (recycled)

Sleeve: 93 % polyester (recycled), 7 % elastane



Contrast insert in honeycomb structure | Sleeve made of highly elastic polyester elastane mix | Thumb hole

128, 140, 152, 164

S, M, L, XL, XXL, 3XL

000 white, **004** white/red, **100** red, **200** sport green, **375** flame/seablue, **400** royal, **404** royal/citro, **800** black, **803** black/citro, **840** stone grey, **900** seablue, **910** seablue/sky blue



8823 - SWEATER POWER

Polyester honeycomb, 100 % polyester (recycled)

Sleeve: 93 % polyester (recycled), 7 % elastane



Contrast insert in honeycomb structure | Sleeve made of highly elastic polyester elastane mix

116, 128, 140, 152, 164

S, M, L, XL, XXL

000 white, **004** white/red, **100** red, **200** sport green, **375** flame/seablue, **400** royal, **404** royal/citro, **800** black, **803** black/citro, **840** stone grey, **900** seablue, **910** seablue/sky blue



8423 - TRAINING TROUSERS POWER

Stretch knit polyester, 90 % polyester (recycled), 10 % elastane

Side insert in honeycomb structure | Side pockets with zip |

Hem with zip | Two-part elastic waistband with drawcord |

Modern cut in ankle length for adult sizes



116, 128, 140, 152, 164

S, M, L, XL, XXL, 3XL

000 white, **105** red/white, **800** black, **802** black/white, **820** anthra light, **900** seablue



AVAILABLE UNTIL
2025



www.jako.com





T E A M [®] L I N E

PERFORMANCE

www.teamSport-ID.com



Team Sport-ID
www.TeamSport-ID.com

JAKO

101

221

403

804



COLOURS

®

- 101** red/black
- 221** soft green/black
- 403** royal/seablue
- 804** black/anthra light
- 808** black/soft yellow
- 845** soft grey/stone grey
- 908** seablue/JAKO blue
- 909** seablue/red

808

845

908

909





908



101



800



221



800



403



900



804



800



904



Back view



808



800



845



820



908



904



909



900



6822 - HOODED JACKET PERFORMANCE

Polyester fleece, 100 % polyester (recycled)

Jacquard shoulder insert | Contrast tape on shoulder | Side pockets with zip



128, 140, 152, 164
S, M, L, XL, XXL, 3XL, 4XL
34, 36, 38, 40, 42, 44

101 red/black, **221** soft green/black, **403** royal/seablue,
804 black/antra light, **808** black/soft yellow,
845 soft grey/stone grey, **908** seablue/JAKO blue, **909** seablue/red



6589 - PRESENTATION TROUSERS ALLROUND

Stretch micro twill, 100 % polyester (recycled)

Elastic material without lining | Side pockets with zip | Ribbed hem | Two-part elastic waistband with drawcord



128, 140, 152, 164
S, M, L, XL, XXL, 3XL, 4XL
34, 36, 38, 40, 42, 44

800 black, **820** antra light, **900** seablue, **904** seablue/neon yellow



908



101



221



403



804



800



800



900



800



808



845



908



909



Back view



800



820



904



900



904



9322 - POLYESTER JACKET PERFORMANCE

Matt polyester tricot, 100 % polyester (recycled)
Jacquard shoulder insert | Contrast tape on shoulder |
Side pockets with zip | Ribbed waistband and cuffs

116, 128, 140, 152, 164
S, M, L, XL, XXL, 3XL, 4XL

101 red/black, 221 soft green/black, 403 royal/seablu,
804 black/antra light, 808 black/soft yellow,
845 soft grey/stone grey, 908 seablu/JAKO blue, 909 seablu/red



9289 - POLYESTER TROUSERS ALLROUND

Matt polyester tricot, 100 % polyester (recycled)
Side pockets with zip | Ribbed hem with zip |
Two-part elastic waistband with drawcord

116, 128, 140, 152, 164
S, M, L, XL, XXL, 3XL, 4XL

800 black, 820 anthra light, 900 seablu, 904 seablu/neon yellow



Back view



101

221

403

804

808

845

909



6122 - T-SHIRT PERFORMANCE

Polyester micro mesh, 100 % polyester (recycled)
Sleeve made of jacquard | Collar with ribbed insert

116, 128, 140, 152, 164
S, M, L, XL, XXL, 3XL, 4XL
34, 36, 38, 40, 42, 44

101 red/black, **221** soft green/black, **403** royal/seablue,
804 black/antra light, **808** black/soft yellow,
845 soft grey/stone grey, **908** seablue/JAKO blue, **909** seablue/red



8622 - ZIP TOP PERFORMANCE

Polyester stretch fleece, 100 % polyester (recycled)

Sleeve: 90 % polyester (recycled), 10 % elastane



Jacquard shoulder insert | Body with soft fleece inside |

Sleeve made of highly elastic polyester elastane mix |

Contrast tape on shoulder | Thumb hole

128, 140, 152, 164

S, M, L, XL, XXL, 3XL

101 red/black, **221** soft green/black, **403** royal/seablue,

804 black/antra light, **808** black/soft yellow,

845 soft grey/stone grey, **908** seablue/JAKO blue, **909** seablue/red



800

820

900

904

Side view

JAKO

JAKO

JAKO

JAKO

8489 - TRAINING TROUSERS ALLROUND

Polyester terry, 100 % polyester (recycled)

Side pockets with zip | Hem with zip |

Two-part elastic waistband with drawcord



116, 128, 140, 152, 164

S, M, L, XL, XXL, 3XL, 4XL

34, 36, 38, 40, 42, 44

800 black, **820** anthra light, **900** seablue, **904** seablue/neon yellow



800

820

900

904

Side view

JAKO

JAKO

JAKO

JAKO

JAKO



8589 - TRAINING SHORTS ALLROUND

Stretch knit polyester, 90 % polyester (recycled), 10 % elastane

Side pockets with zip | Two-part elastic waistband with drawcord



128, 140, 152, 164

S, M, L, XL, XXL, 3XL

34, 36, 38, 40, 42, 44

800 black, **820** anthra light, **900** seablue, **904** seablue/neon yellow



908



101

221

403

804

808

845

909



6722 - HOODED SWEATER PERFORMANCE

Polyester fleece, 100 % polyester (recycled)

Jacquard shoulder insert | Contrast tape on shoulder | Side pockets | Hood with drawcord



116, 128, 140, 152, 164

S, M, L, XL, XXL, 3XL, 4XL

34, 36, 38, 40, 42, 44

101 red/black, **221** soft green/black, **403** royal/seablue,

804 black/anthra light, **808** black/soft yellow,

845 soft grey/stone grey, **908** seablue/JAKO blue, **909** seablue/red

908



Back view



904



Side view



101

221

403

804

808

845

909



800

820

900

**6322 - POLO PERFORMANCE**

Polyester micro mesh, 100 % polyester (recycled)

Sleeve made of jacquard

140, 152, 164
S, M, L, XL, XXL, 3XL, 4XL
34, 36, 38, 40, 42, 44101 red/black, 221 soft green/black, 403 royal/seablue,
804 black/antra light, 808 black/soft yellow,
845 soft grey/stone grey, 908 seablue/JAKO blue, 909 seablue/red**6289 - SHORTS ALLROUND**

Stretch micro twill, 100 % polyester (recycled)

Side pockets with zip |
Two-part elastic waistband with drawcord128, 140, 152, 164
S, M, L, XL, XXL, 3XL, 4XL
34, 36, 38, 40, 42, 44

800 black, 820 antra light, 900 seablue, 904 seablue/neon yellow





T E A M L I N E

CLASSICO





JAKO

TEAMSPORT-ID
www.TeamSport-id.com

01

03

04

06

08



COLOURS

- 01 red
- 03 citro
- 04 royal
- 06 sport green
- 08 black
- 09 seablue
- 10 purple
- 14 maroon
- 19 neon orange
- 42 night blue/citro

09

10

14

19

42



6850 - HOODED JACKET CLASSICO

Bonded polyester fleece, 100 % polyester
 Micro fleece lining | Side pockets with zip

128, 140, 152, 164
 S, M, L, XL, XXL, 3XL, 4XL
 34, 36, 38, 40, 42, 44, 46, 48

01 red, **03** citro, **04** royal, **06** sport green,
08 black, **09** seablue, **10** purple, **14** maroon,
19 neon orange, **42** night blue/citro



9850 - LEISURE JACKET CLASSICO

Bonded polyester fleece, 100 % polyester
Micro fleece lining | Side pockets with zip

128, 140, 152, 164
S, M, L, XL, XXL, 3XL, 4XL
34, 36, 38, 40, 42, 44, 46, 48

01 red, 03 citro, 04 royal, 06 sport green,
08 black, 09 seablue, 10 purple, 14 maroon,
19 neon orange, 42 night blue/citro

6550 - PRESENTATION TROUSERS CLASSICO

Micro twill, 100 % polyester
Lining: 100 % polyester

Inner mesh lining | Side pockets with zip | Hem with zip |
Elastic waistband with drawcord

128, 140, 152, 164
S, M, L, XL, XXL, 3XL, 4XL

08 black, 09 seablue, 21 anthracite, 42 night blue

ADDITIONAL SIZES

Women, short and long sizes on page 136



04

08



01

03

04

06

08

08

08

08

08

08



Back view

09

10

14

19

42

09

08

08

08

42

9350 - POLYESTER JACKET CLASSICO

Shiny polyester tricot, 100 % polyester

Side pockets with zip |
Ribbed waistband and cuffs

104, 116, 128, 140, 152, 164
S, M, L, XL, XXL, 3XL, 4XL

01 red, **03** citro, **04** royal, **06** sport green,
08 black, **09** seablue, **10** purple, **14** maroon,
19 neon orange, **42** night blue/citro

9250 - POLYESTER TROUSERS CLASSICO

Shiny polyester tricot, 100 % polyester

Side pockets | Ribbed hem with zip |
Elastic waistband with drawcord

104, 110, 116, 122, 128, 134,
140, 146, 152, 158, 164
S, M, L, XL, XXL, 3XL, 4XL

08 black, **09** seablue, **42** night blue

ADDITIONAL SIZES

Women, short and long sizes on page 129



04



Back view



01

03

08

06

09

10

14

19

42



6150 - T-SHIRT CLASSICO

Polyester jacquard, 100 % polyester

Ribbed collar

116, 128, 140, 152, 164

S, M, L, XL, XXL, 3XL, 4XL

01 red, **03** citro, **04** royal, **06** sport green,
08 black, **09** seablu, **10** purple, **14** maroon,
19 neon orange, **42** night blue/citro



08



01



08



03



08



04



08



06



08



08



08



09



09



10



08



14



08



19



08



42



42



Back view



8750 - TRAINING JACKET CLASSICO

Polyester terry, 100 % polyester
Side pockets with zip | Cuffs and hem with elastic binding

128, 140, 152, 164
S, M, L, XL, XXL, 3XL

01 red, 03 citro, 04 royal, 06 sport green,
08 black, 09 seablue, 10 purple, 14 maroon,
19 neon orange, 42 night blue/citro

8450 - TRAINING TROUSERS CLASSICO

Polyester piqué, 100 % polyester
Side pockets with zip | Hem with zip | Elastic waistband with drawcord | Ribbed insert on calf

104, 110, 116, 122, 128, 134,
140, 146, 152, 158, 164
S, M, L, XL, XXL, 3XL

08 black, 09 seablue, 42 night blue

ADDITIONAL SIZES

Short and long sizes on page 131



04



Back view



01

03

08

06

09

10

14

19

42



8650 - ZIP TOP CLASSICO

Polyester terry, 100 % polyester
Cuffs and hem with elastic binding

128, 140, 152, 164
S, M, L, XL, XXL, 3XL

01 red, **03** citro, **04** royal, **06** sport green,
08 black, **09** seablue, **10** purple, **14** maroon,
19 neon orange, **42** night blue/citro



04



Back view



01

03

08

06

09

10

14

19

42



8850 - SWEATER CLASSICO

Polyester terry, 100 % polyester

Ribbed collar | Cuffs and hem with elastic binding

116, 128, 140, 152, 164

S, M, L, XL, XXL

01 red, **03** citro, **04** royal, **06** sport green, **08** black, **09** seablue, **10** purple, **14** maroon, **19** neon orange, **42** night blue/citro

04



Back view



01

03

08

06

09

07



Back view



00

01

08

03

09

19

18

21

22

89

**6050 - TANK TOP CLASSICO**

Polyester jacquard, 100 % polyester

Ribbed collar

S, M, L, XL, XXL

01 red, **03** citro, **04** royal, **06** sport green,
08 black, **09** seablue

**6164 - FUNCTIONAL SHIRT PROMO**

Polyester interlock, 100 % polyester

Ribbed collar | Until end of 2026

116, 128, 140, 152, 164

S, M, L, XL, XXL, 3XL, 4XL

00 white, **01** sport red, **03** citro, **07** sport royal,
08 black, **09** navy, **18** navy/flame, **19** neon orange,
21 anthracite/lime, **22** soft green, **89** JAKO blue



04



Back view



01 03 08 06 09 10 14 19 42



6350 - POLO CLASSICO

Polyester jacquard, 100 % polyester
Contrast piping on cuffs

140, 152, 164
S, M, L, XL, XXL, 3XL, 4XL
34, 36, 38, 40, 42, 44, 46, 48

01 red, **03** citro, **04** royal, **06** sport green, **08** black, **09** seablue,
10 purple, **14** maroon, **19** neon orange, **42** night blue/citro

08



09 21 42



6250 - SHORTS CLASSICO

Stretch micro twill, 100 % polyester
Side pockets | Elastic waistband
with drawcord

116, 128, 140, 152, 164
S, M, L, XL, XXL, 3XL, 4XL

08 black, **09** seablue,
21 anthracite, **42** night blue



400



Back view



6160 - T-SHIRT PROMO

Single jersey, 100 % cotton (organic)

Col. 505, 506, 512: 60 % cotton (organic), 40 % polyester (recycled)

Col. 520: 90 % cotton (organic), 10 % viscose

Cotton from controlled certified cultivation |

Pre-shrunk | Ribbed collar

116, 128, 140, 152, 164

S, M, L, XL, XXL, 3XL, 4XL

34, 36, 38, 40, 42, 44

000 white, 100 red, 151 wine red/neon orange, 220 soft green,

231 khaki/neon green, 400 royal, 440 JAKO blue, 505 black melange/citro,

506 black melange/neon orange, 512 seablue melange/neon yellow,

520 light grey melange, 800 black, 840 stone grey, 907 seablue/indigo



AVAILABLE UNTIL

2027



T E A M L I N E

PRO CASUAL

www.TeamSport-ID.com

TEAMLINE
PRO CASUAL



TeamSport-ID

www.TeamSport-ID.com

000

141

385

445



COLOURS

®

- 000** white
- 141** chili red
- 385** beige
- 445** smokey blue
- 800** black
- 855** ash grey
- 900** seablue

800

855

900



385



000

800



141

800



385

800



445

800



Back view



800

800



855

855



900

900



9845 - JACKET PRO CASUAL

Soft doubleface polyester

77 % polyester (46 % recycled), 18 % viscose, 5 % elastane

Zip with JAKO branding | Tonal JAKO branding on right sleeve | Side pockets | Additional side pocket with concealed zip | Soft touch

S, M, L, XL, XXL, 3XL, 4XL

34, 36, 38, 40, 42, 44

000 white, **141** chili red, **385** beige, **445** smokey blue, **800** black, **855** ash grey, **900** seablue



6545 - JOGGING TROUSERS PRO CASUAL

Soft doubleface polyester

77 % polyester (46 % recycled), 18 % viscose, 5 % elastane

Side pockets with zip and JAKO branding | Soft touch

S, M, L, XL, XXL, 3XL

34, 36, 38, 40, 42, 44

800 black, **855** ash grey, **900** seablue

800



6745 - ZIP HOODIE PRO CASUAL

Soft doubleface polyester
 77 % polyester (46 % recycled), 18 % viscose, 5 % elastane
 Zip with JAKO branding | Tonal JAKO branding on right sleeve | Attached pocket | Additional side pocket with concealed zip | Soft touch

S, M, L, XL, XXL, 3XL
 34, 36, 38, 40, 42, 44

000 white, **141** chili red, **385** beige, **445** smokey blue, **800** black, **855** ash grey, **900** seablue



385



Back view



000

141

445

800

855

900



6145 - T-SHIRT PRO CASUAL

Polyester stretch jersey
90 polyester (72 % recycled), 10 % elastane



Tonal JAKO branding on right sleeve |
Soft touch | Side seam slit | Extended back

S, M, L, XL, XXL, 3XL
34, 36, 38, 40, 42, 44

000 white, **141** chili red, **385** beige, **445** smokey blue,
800 black, **855** ash grey, **900** seablue



6345 - POLO PRO CASUAL

Polyester stretch jersey

90 polyester (72 % recycled), 10 % elastane



Zip with JAKO branding | Tonal JAKO branding on right sleeve | Soft touch | Side seam slit | Extended back

S, M, L, XL, XXL, 3XL, 4XL

34, 36, 38, 40, 42, 44

000 white, **141** chili red, **385** beige, **445** smokey blue,

800 black, **855** ash grey, **900** seablue



6245 - SHORTS PRO CASUAL

Soft doubleface polyester

77 % polyester (46 % recycled), 18 % viscose, 5 % elastane

Side pockets with zip and JAKO branding | Soft touch

S, M, L, XL, XXL, 3XL, 4XL

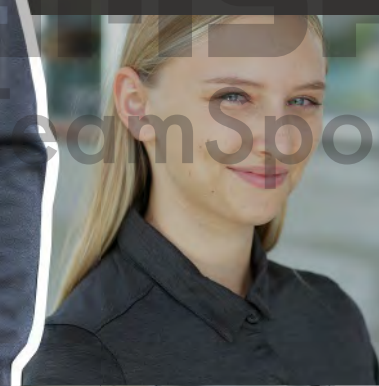
800 black, **855** ash grey, **900** seablue



AVAILABLE UNTIL

2025

TEAMSPORT
www.TeamSport.com





T E A M L I N E

SP PREMIUM
BASICS



JAKO

JAKO

JAKO

JAKO

JAKO

JAKO

TeamSport-ID
www.TeamSport-ID.com

01

04

21



COLOURS

®

- 01 red melange
- 04 royal melange
- 21 anthracite melange
- 40 light grey melange
- 28 khaki melange
- 49 seablue melange

40

28

49



21



21



01

21



04

21



21

21



28

28



40

40



49

49



Back view



6829 - HOODED JACKET PREMIUM BASICS

Double tech knit, 81 % polyester, 14 % viscose, 5 % elastane
 Melange look | Hood with drawcord | Side pockets | Cotton touch | Breathable interlock on inner side

S, M, L, XL, XXL, 3XL, 4XL
 34, 36, 38, 40, 42, 44

01 red melange, 04 royal melange, 21 anthracite melange,
 28 khaki melange, 40 light grey melange, 49 seablue melange



8429 - JOGGING TROUSERS PREMIUM BASICS

Double tech knit, 81 % polyester, 14 % viscose, 5 % elastane
 Melange look | Side pockets with zip | Elastic waistband with drawcord | Cotton touch | Breathable interlock on inner side

S, M, L, XL, XXL, 3XL, 4XL
 34, 36, 38, 40, 42, 44

21 anthracite melange, 28 khaki melange,
 40 light grey melange, 49 seablue melange



21



Back view



01 04 28 40 49



6729 - HOODED SWEATER PREMIUM BASICS

Double tech knit, 81 % polyester, 14 % viscose, 5 % elastane
 Melange look | Hood with drawcord | Side pockets |
 Cotton touch | Breathable interlock on inner side

S, M, L, XL, XXL, 3XL, 4XL
 34, 36, 38, 40, 42, 44

01 red melange, **04** royal melange, **21** anthracite melange,
28 khaki melange, **40** light grey melange, **49** seablue melange



Back view



01

04

28

40

49



6329 - POLO PREMIUM BASICS

Polyester stretch jersey, 92 % polyester, 8 % elastane
Melange look | Side seam slit

S, M, L, XL, XXL, 3XL, 4XL
34, 36, 38, 40, 42, 44

01 red melange, **04** royal melange, **21** anthracite melange,
28 khaki melange, **40** light grey melange, **49** seablue melange

21



Back view



01

04

28

40

49

21



28

40

49



6129 - T-SHIRT PREMIUM BASICS

Polyester stretch jersey, 92 % polyester, 8 % elastane
Melange look

S, M, L, XL, XXL, 3XL, 4XL
34, 36, 38, 40, 42, 44

01 red melange, **04** royal melange, **21** anthracite melange,
28 khaki melange, **40** light grey melange, **49** seablue melange



8529 - SHORTS PREMIUM BASICS

Double tech knit, 81 % polyester, 14 % viscose, 5 % elastane
Melange look | Side pockets with zip | Elastic waistband with drawcord | Cotton touch |
Breathable interlock on inner side

S, M, L, XL, XXL, 3XL, 4XL
34, 36, 38, 40, 42, 44

21 anthracite melange, **28** khaki melange,
40 light grey melange, **49** seablue melange



AVAILABLE UNTIL
2026





T E A M L I N E

BASE



JAKO

JAKO

JAKO

JAKO

JAKO

JAKO

JAKO

JAKO

TeamSport-ID
www.TeamSport-ID.com

00

01

04

06

08

09



COLOURS

- 00[®] white
- 01 red
- 04 royal
- 06 sport green
- 08 black
- 09 seablue
- 21 anthracite
- 41 light grey melange
- 89 JAKO blue

21

41

89



41



08



08



08



08



09



08



41



09



Back view



6865 - HOODED JACKET BASE

French terry, 70 % cotton (organic), 30 % polyester (recycled)

Col. 41: 60 % cotton (organic), 34 % polyester (recycled), 6 % viscose

Cotton from controlled certified cultivation | Pre-shrunk | Attached pockets | Hood with drawcord | Children sizes without drawcord | Ribbed waistband and cuffs

128, 140, 152, 164
S, M, L, XL, XXL, 3XL, 4XL
34, 36, 38, 40, 42, 44

01 red, 04 royal, 06 sport green, 08 black, 09 seablue,
21 anthracite, 41 light grey melange, 89 JAKO blue



8465 - JOGGING TROUSERS BASE

French terry, 70 % cotton (organic), 30 % polyester (recycled)

Col. 41: 60 % cotton (organic), 34 % polyester (recycled), 6 % viscose

Cotton from controlled organic cultivation | Pre-shrunk | Side pockets with zip | Elastic waistband with drawcord

128, 140, 152, 164
S, M, L, XL, XXL, 3XL, 4XL

8465D - WOMEN SIZES

34, 36, 38, 40, 42, 44

08 black, 09 seablue, 41 light grey melange

TeamSport-ID
www.TeamSport-ID.com



41



Back view



01 04 06 08 09 21 89



6765 - HOODED SWEATER BASE

French terry, 70 % cotton (organic), 30 % polyester (recycled)

Col. 41: 60 % cotton (organic), 34 % polyester (recycled), 6 % viscose

Cotton from controlled certified cultivation | Pre-shrunk |

Attached pocket | Hood with drawcord | Children sizes

without drawcord | Ribbed waistband and cuffs

128, 140, 152, 164

S, M, L, XL, XXL, 3XL, 4XL

01 red, 04 royal, 06 sport green, 08 black, 09 seablue,

21 anthracite, 41 light grey melange, 89 JAKO blue



41



Back view



00

01

04

08

06

09

21

89



6165 - T-SHIRT BASE

Single jersey, 100 % cotton (organic)

Col. 41: 90 % cotton (organic), 10 % viscose

Cotton from controlled certified cultivation |

Pre-shrunk | Ribbed collar

116, 128, 140, 152, 164

S, M, L, XL, XXL, 3XL, 4XL

34, 36, 38, 40, 42, 44

00 white, 01 red, 04 royal, 06 sport green, 08 black, 09 seablue,

21 anthracite, 41 light grey melange, 89 JAKO blue



6565 - JOGGING TROUSERS BASE WITH CUFFS

French terry, 70 % cotton (organic), 30 % polyester (recycled)
Col. 41: 60 % cotton (organic), 34 % polyester (recycled), 6 % viscose
 Cotton from controlled organic cultivation | Pre-shrunk |
 Side pockets | Elastic waistband with drawcord | Ribbed hem

128, 140, 152, 164
 S, M, L, XL, XXL, 3XL, 4XL

6565D - WOMEN SIZES

34, 36, 38, 40, 42, 44

08 black, **09** seablue, **41** light grey melange



8565 - JOGGING SHORTS BASE

French terry, 70 % cotton (organic), 30 % polyester (recycled)
Col. 41: 60 % cotton (organic), 34 % polyester (recycled), 6 % viscose
 Cotton from controlled organic cultivation | Pre-shrunk |
 Side pockets with zip | Elastic waistband with drawcord

128, 140, 152, 164
 S, M, L, XL, XXL, 3XL, 4XL

8565D - WOMEN SIZES

34, 36, 38, 40, 42, 44

08 black, **09** seablue, **41** light grey melange



Back view



00

01

04

41

06

09

21

89



6365 - POLO BASE

Cotton piqué, 100 % cotton (organic)

Col. 41: 90 % cotton (organic), 10 % viscose

Cotton from controlled certified cultivation |
Pre-shrunk

140, 152, 164

S, M, L, XL, XXL, 3XL, 4XL

34, 36, 38, 40, 42, 44

00 white, 01 red, 04 royal, 06 sport green, 08 black,

09 seablue, 21 anthracite, 41 light grey melange, 89 JAKO blue



800



Back view



000 100 151 220 231 400 440 505 506 512 520 840 907



6160 - T-SHIRT PROMO

Single jersey, 100 % cotton (organic)

Col. 505, 506, 512: 60 % cotton (organic), 40 % polyester (recycled)

Col. 520: 90 % cotton (organic), 10 % viscose

Cotton from controlled certified cultivation |

Pre-shrunk | Ribbed collar

116, 128, 140, 152, 164

S, M, L, XL, XXL, 3XL, 4XL

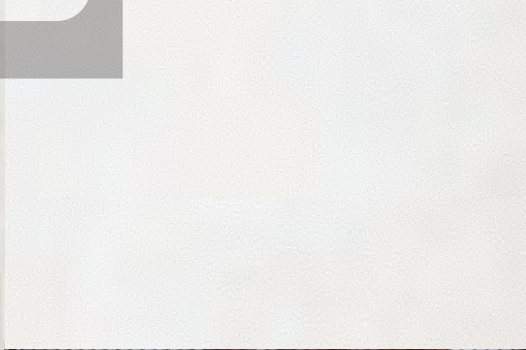
34, 36, 38, 40, 42, 44

000 white, **100** red, **151** wine red/neon orange, **220** soft green, **231** khaki/neon green, **400** royal, **440** JAKO blue, **505** black melange/citro, **506** black melange/neon orange, **512** seablue melange/neon yellow, **520** light grey melange, **800** black, **840** stone grey, **907** seablue/indigo



CLUB COLLECTION
FC EGG®

www.TeamSport.de





CORPORATE TEAMWEAR

SPORT-
ID.COM

We offer the perfect equipment for all teams: whether for sport, leisure or work. Our CORPORATE TEAMWEAR can be customised and is ideal for your own club collection.

TEAMLINE DOUBLETEX



TESTED WORKWEAR®

- Exclusively developed and **highly functional JAKO material mix**
- Designed specifically for **top performance at work and in leisure time**
- Innovative **VORTEX® yarn technology**
- Reinforced seams for high **durability** and **dimensional stability**
- Certified with the **“Tested Workwear”** quality label from Hohenstein
- Suitable for **professional textile laundering** according to DIN EN ISO 15797

HOHENSTEIN

Hohenstein tests our Teamline for the following properties:



- **Colour fastness** such as light, perspiration, rub and wash fastness and with strong heat development
- **Physical properties** such as seam and tear strength, elasticity and pilling
- **Optical properties** such as dimensional stability, twisting of the seams and the appearance after numerous intensive washes

TEAMLINE ORGANIC



BASICS MADE FROM ORGANIC COTTON

- Cotton from **controlled organic cultivation**
- **Combed ring-spun** cotton fibers
- Very **long durability** due to **reinforced seams**

JAKO FAIR

The JAKO FAIR label indicates which products meet particularly high standards in terms of sustainability:



100 %

of the materials used are made from recycled raw materials or organic cotton.



AT LEAST 50 %

of the materials used are made from recycled raw materials or organic cotton.



270



Back view



000 100 130 240 300 260 360 380 400 460 520 800 830 840 900



C6120 - T-SHIRT ORGANIC

Single jersey, 100 % cotton (organic)

Col. 520: 90 % cotton (organic), 10 % viscose

Cotton from controlled organic cultivation | 160 g/m² |

Washable at 60 °C | Pre-shrunk | Men: Ribbed round neck collar |

Women: Rib collar with V-neck | Reinforced shoulder seams |

JAKO size label in neck | JAKO flag label on left side seam

116, 128, 140, 152, 164

S, M, L, XL, XXL, 3XL, 4XL, 5XL

34, 36, 38, 40, 42, 44, 46, 48

000 white, **100** red, **130** maroon, **240** olive, **260** green, **270** lime, **300** citro, **360** orange, **380** sand, **400** royal, **460** ice blue, **520** light grey melange, **800** black, **830** anthracite, **840** stone grey, **900** seablue

240



Back view



000 100 400 520 800 830 840 900

260



Back view



000 100 130 400 800 830 900

**C6121 - T-SHIRT ORGANIC STRETCH**

Single jersey, 95 % cotton (organic), 5 % elastane
 Col. 520: 90 % cotton (organic), 5 % elastane, 5 % viscose



Cotton from controlled organic cultivation | 170 g/m² | Washable at 60 °C | Pre-shrunk | Men: Ribbed round neck collar | Women: Feminine cut round neck | Reinforced shoulder seams | JAKO size label in neck | JAKO flag label on left side seam

S, M, L, XL, XXL, 3XL, 4XL, 5XL
 34, 36, 38, 40, 42, 44, 46, 48

000 white, 100 red, 240 olive, 400 royal, 520 light grey melange,
 800 black, 830 anthracite, 840 stone grey, 900 seablue

C6130 - T-SHIRT DOUBLETEX

DOUBLETEX Single Jersey, 55 % polyester, 45 % cotton
 VORTEX ® yarn technology | 180 g/m² | 60 °C industrial laundry according to DIN EN ISO 15797 | Ribbed round neck collar | Sewn-on neck mirror | Pre-shrunk | Hanging straps in the side seams | Reinforced seams on shoulder and armhole | JAKO size label in neck | JAKO flag label on left side seam

S, M, L, XL, XXL, 3XL, 4XL, 5XL
 34, 36, 38, 40, 42, 44, 46, 48

000 white, 100 red, 130 maroon, 260 green,
 400 royal, 800 black, 830 anthracite, 900 seablue

460



Back view



000 100 130 240 270 260 300 360 380 400 520 800 830 840 900

400



Back view



000 100 240 520 800 830 840 900

**C6320 - POLO ORGANIC**

Piqué, 100 % cotton (organic)

Col. 520: 90 % cotton (organic), 10 % viscose

Cotton from controlled organic cultivation | 200 g/m² | Washable at 60 °C | Pre-shrunk | Ribbed Polo collar | Three-button placket | Ribbed cuffs | Reinforced shoulder seams | Side seam slit | JAKO size label in neck | JAKO flag label on left side seam

116, 128, 140, 152, 164

S, M, L, XL, XXL, 3XL, 4XL, 5XL

34, 36, 38, 40, 42, 44, 46, 48

000 white, **100** red, **130** maroon, **240** olive, **260** green, **270** lime, **300** citro, **360** orange, **380** sand, **400** royal, **460** ice blue, **520** light grey melange, **800** black, **830** anthracite, **840** stone grey, **900** seablue

**C6321 - POLO ORGANIC STRETCH**

Piqué, 94 % cotton (organic), 6 % elastane

Col. 520: 85 % cotton (organic), 10 % viscose, 5 % elastane

Cotton from controlled organic cultivation | 220 g/m² | Washable at 60 °C | Pre-shrunk | Three-button placket | Reinforced shoulder seams | Side seam slit | JAKO size label in neck | JAKO flag label on left side seam

S, M, L, XL, XXL, 3XL, 4XL, 5XL

34, 36, 38, 40, 42, 44, 46, 48

000 white, **100** red, **240** olive, **400** royal, **520** light grey melange, **800** black, **830** anthracite, **840** stone grey, **900** seablue



400



Back view



000

100

130

260

800

830

900

C6330 - POLO DOUBLETEX

DOUBLETEX Piqué, 55 % cotton, 45 % polyester

VORTEX® yarn technology | 200 g/m² | 60 °C industrial laundry according to DIN EN ISO 15797 | Pre-shrunk | Three-button placket | Ribbed cuffs | Sewn-on neck mirror | Hanging straps in the side seams | Reinforced seams on shoulder and armhole | Side seam slit | JAKO size label in neck | JAKO flag label on left side seam

S, M, L, XL, XXL, 3XL, 4XL, 5XL
34, 36, 38, 40, 42, 44, 46, 48

000 white, **100** red, **130** maroon, **260** green,
400 royal, **800** black, **830** anthracite, **900** seablue



830



Back view



000

100

130

260

400

800

900

C9830 - SWEAT JACKET DOUBLETEX

DOUBLETEX French terry, 56 % cotton, 44 % polyester
VORTEX® yarn technology | 320 g/m² | 60 °C industrial
laundry according to DIN EN ISO 15797 | Pre-shrunk |
Ribbed waistband and cuffs | Side pockets with zip |
Sewn-on neck mirror | Hanging straps in the side seams |
Reinforced seams on shoulder and armhole | JAKO size
label in neck | JAKO flag label on left side seam

S, M, L, XL, XXL, 3XL, 4XL, 5XL
34, 36, 38, 40, 42, 44, 46, 48

000 white, **100** red, **130** maroon, **260** green,
400 royal, **800** black, **830** anthracite, **900** seablue



C8620 - ZIP TOP ORGANIC

70 % cotton (organic), 30 % polyester (recycled)
Col. 520: 65 % cotton (organic), 30 % polyester (recycled), 5 % viscose
 Cotton from controlled organic cultivation | 300 g/m² | Washable at 60 °C | Pre-shrunk | Sweater with softly roughened inside | 1/4-front zip | Ribbed waistband and cuffs | Reinforced shoulder seams | JAKO size label in neck | JAKO flag label on left side seam

S, M, L, XL, XXL, 3XL, 4XL, 5XL

100 red, **260** green, **380** sand, **400** royal, **520** light blue melange, **800** black, **830** anthracite, **840** stone grey, **900** seablue

C8630 - ZIP TOP DOUBLETEX

DOUBLETEX French terry, 56 % cotton, 44 % polyester
 VORTEX ® yarn technology | 320 g/m² | 60 °C industrial laundry according to DIN EN ISO 15797 | Pre-shrunk | 1/4-front zip | Ribbed waistband and cuffs | Sewn-on neck mirror | Hanging straps in the side seams | Reinforced seams on shoulder and armhole | JAKO size label in neck | JAKO flag label on left side seam

S, M, L, XL, XXL, 3XL, 4XL, 5XL

000 white, **100** red, **130** maroon, **260** green, **400** royal, **800** black, **830** anthracite, **900** seablue

100



Back view



130



Back view



000 260 380 400 520 800 830 840 900



000 100 260 400 800 830 900



C8820 - SWEATER ORGANIC

70 % cotton (organic), 30 % polyester (recycled)
Col. 520: 65 % cotton (organic), 30 % polyester (recycled), 5 % viscose
 Cotton from controlled organic cultivation | 300 g/m² |
 Washable at 60 °C | Pre-shrunk | Sweater with softly
 roughened inside | Ribbed round neck collar | Ribbed
 waistband and cuffs | Reinforced shoulder seams |
 JAKO size label in neck | JAKO flag label on left side seam

S, M, L, XL, XXL, 3XL, 4XL, 5XL

000 white, **100** red, **260** green, **380** sand,
400 royal, **520** light grey melange, **800** black,
830 anthracite, **840** stone grey, **900** seablue

C8830 - SWEATER DOUBLETEX

DOUBLETEX French terry, 56 % cotton, 44 % polyester
 VORTEX ® yarn technology | 320 g/m² | 60 °C industrial
 laundry according to DIN EN ISO 15797 | Pre-shrunk |
 Ribbed round neck collar | Ribbed waistband and cuffs |
 Sewn-on neck mirror | Hanging straps in the side seams |
 Reinforced seams on shoulder and armhole | JAKO size
 label in neck | JAKO flag label on left side seam

S, M, L, XL, XXL, 3XL, 4XL, 5XL

000 white, **100** red, **130** maroon, **260** green,
400 royal, **800** black, **830** anthracite, **900** seablue



100



Back view



000

400

800

830

900



C6420 - LONGSLEEVE ORGANIC

Single jersey, 100 % cotton (organic)

Cotton from controlled organic cultivation | 200 g/m² | Washable at 60 °C | Round neck collar with ribbed insert | Reinforced shoulder seams | JAKO size label in neck | JAKO flag label on left side seam

XS, S, M, L, XL, XXL, 3XL, 4XL, 5XL

000 white, **100** red, **400** royal,
800 black, **830** anthracite, **900** seablue

840



Back view



240



Back view



000 100 130 240 260 380 400 520 800 830 900



000 100 130 270 260 300 360 400 460 520 800 830 840 900



C6720 - HOODED SWEATER ORGANIC

70 % cotton (organic), 30 % polyester (recycled)
Col. 520: 65 % cotton (organic), 30 % polyester (recycled), 5 % viscose
 Cotton from controlled organic cultivation | 300 g/m² | Washable at 60 °C | Pre-shrunk | Sweater with softly roughened inside | Hood with single jersey inside | Cords with metal eyelets and metal ends | Ribbed waistband and cuffs | Attached pocket | Reinforced shoulder seams | Children sizes without cords | JAKO size label in neck | JAKO flag label on left side seam

116, 128, 140, 152, 164

S, M, L, XL, XXL, 3XL, 4XL, 5XL

000 white, **100** red, **130** maroon, **240** olive, **260** green, **380** sand, **400** royal, **520** light grey melange, **800** black, **830** anthracite, **840** stone grey, **900** seablue



C6820 - HOODED JACKET ORGANIC

70 % cotton (organic), 30 % polyester (recycled)
Col. 520: 65 % cotton (organic), 30 % polyester (recycled), 5 % viscose
 Cotton from controlled organic cultivation | 300 g/m² | Washable at 60 °C | Pre-shrunk | Sweater with softly roughened inside | Hood with single jersey inside | Cords with metal eyelets and metal ends | Ribbed waistband and cuffs | Attached pocket | Reinforced shoulder seams | JAKO size label in neck | JAKO flag label on left side seam

S, M, L, XL, XXL, 3XL, 4XL, 5XL

34, 36, 38, 40, 42, 44, 46, 48

000 white, **100** red, **130** maroon, **240** olive, **260** green, **270** lime, **300** citro, **360** orange, **400** royal, **460** ice blue, **520** light grey melange, **800** black, **830** anthracite, **840** stone grey, **900** seablue



C7507 - SOFTSHELL TROUSERS

100 % polyester, 8000 mm PU/5000 g/m²/24h
220 g/m² | Washable at 30 °C | Wind and
water-repellent outer material | Soft fleece
on inside | Side pockets with zip | Elastic
waistband with zip and button | Hem with zip

S, M, L, XL, XXL, 3XL
34, 36, 38, 40, 42, 44

800 black



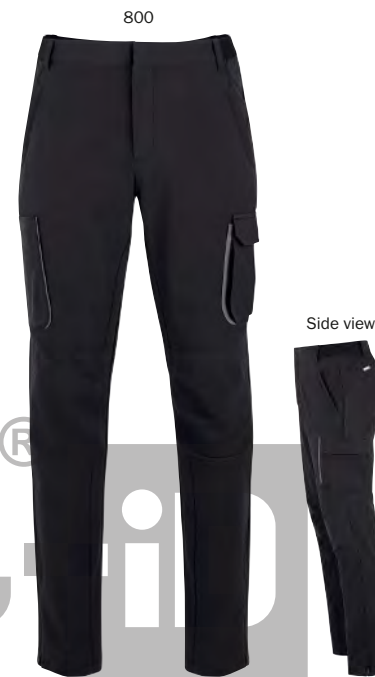
C8510 - FUNCTIONAL SHORTS WORK

90 % polyamide, 10 % elastane

Made from elastic, durable and breathable 4 way stretch material | 175 g/m² main material, 197 g/m² insert material | Washable at 40 °C | Ergonomic cut | Slip pockets for cutter knife or pens | Side pockets with zip | Mobile phone pocket with velcro closure | Back pocket with velcro closure | Reflective inserts | Waistband with press button, hook and zip | Belt loops | JAKO flag label on back seam

S, M, L, XL, XXL, 3XL, 4XL, 5XL
34, 36, 38, 40, 42, 44, 46, 48

800 black



C8410 - FUNCTION TROUSERS WORK

90 % polyamide, 10 % elastane

Made from elastic, durable and breathable 4 way stretch material | 175 g/m² main material, 197 g/m² insert material | Washable at 40 °C | Ergonomic cut | Slip pockets for cutter knife or pens | Side pockets with zip | Mobile phone pocket with velcro closure | Back pocket with velcro closure | Reflective inserts | Waistband with press button, hook and zip | Belt loops | Hem with zip | JAKO flag label on back seam

S, M, L, XL, XXL, 3XL, 4XL, 5XL
34, 36, 38, 40, 42, 44, 46, 48

SHORT SIZES

Men: 24, 25, 26, 27, 28, 29, 30
Women: 18, 19, 20, 21, 22, 23

800 black



C6240 - SHORTS CASUAL



Polyester doobby
90 % polyester (recycled), 10 % elastane

Side pockets | Waistband with press button and zip | Belt loops | Zip pocket on the back

S, M, L, XL, XXL, 3XL, 4XL
34, 36, 38, 40, 42, 44

800 black



C6540 - LEISURE TROUSERS CASUAL



Polyester doobby
90 % polyester (recycled), 10 % elastane

Side pockets | Waistband with press button and zip | Belt loops | Zip pocket on the back | Hem with elastic insert | Modern cut in ankle length

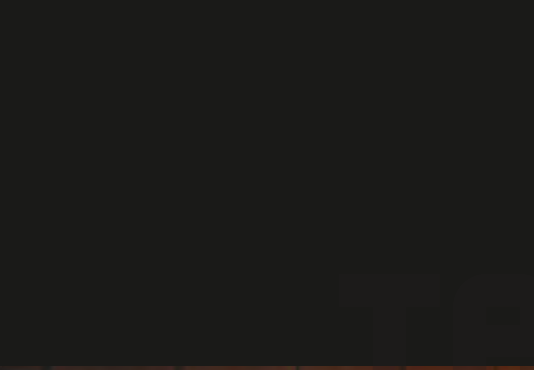
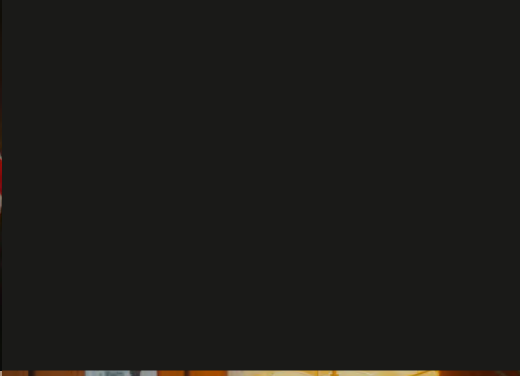
S, M, L, XL, XXL, 3XL, 4XL
34, 36, 38, 40, 42, 44

SHORT SIZES

Men: 24, 25, 26, 27, 28, 29, 30
Women: 18, 19, 20, 21, 22, 23

800 black

TEAMSPORT
TeamSport-ID.com



AVAILABLE UNTIL
2025





TeamSp
www.TeamSp

RETRO





9811 - LEISURE JACKET RETRO

Stretch micro twill, 100 % polyester (recycled)

Lining: 100 % polyester



Design inspired by the early JAKO days |
JAKO retro logo from 1992 |
Side pockets with zip

S, M, L, XL, XXL, 3XL, 4XL

816 black/white/red,

817 black/white/stone grey,

912 seablue/white/sky blue



6511 - LEISURE TROUSERES RETRO

Stretch micro twill, 100 % polyester (recycled)

Lining: 100 % polyester



JAKO retro logo from 1992 |
Side pockets with zip |
Elastic waistband with drawcord

S, M, L, XL, XXL, 3XL, 4XL

800 black, **900** seablue



100

900



6711 - HOODED SWEATER RETRO

70 % cotton (organic), 30 % polyester (recycled)

JAKO retro logo from 1992 | Cotton from controlled organic cultivation | Sweater with softly roughened inside | Ribbed waistband and cuffs | Attached pocket | Pre-shrunk

S, M, L, XL, XXL, 3XL, 4XL

100 red, 800 black, 900 seablue



000

100

900



6114 - T-SHIRT RETRO

Single jersey, 100 % cotton (organic)

JAKO retro logo from 1992 | Cotton from controlled organic cultivation | Ribbed round neck collar | Pre-shrunk

S, M, L, XL, XXL, 3XL, 4XL

000 white, 100 red, 800 black, 900 seablue

SPORT-ID.com

TROUSERS

POLYESTER TROUSERS

MATERIAL

Solid, hard-wearing material

FUNCTION

- Elastic waistband with drawcord
- Side pockets with zip
- Easy to take off due to zipped hem

TRAINING TROUSERS TRAINING SHORTS

MATERIAL

Elastic material for optimal mobility

FUNCTION

- Keep Dry
- Body contoured fit
- Elastic waistband with drawcord



LEISURE TROUSERS LEISURE SHORTS

MATERIAL

Elastic woven fabric with an elegant structured look

FUNCTION

- Keep Dry
- Elastic waistband with drawcord
- Side pockets with zip



JOGGING TROUSERS JOGGING SHORTS

MATERIAL

Soft and comfortable material

FUNCTION

- Keep Dry
- Elastic waistband with drawcord
- Side pockets with zip



TeamSport.com



900



000

105

800

820

900



9270 - POLYESTER TROUSERS DYNAMIC

Polyester piquet, 100 % polyester (recycled)

Side pockets | Hem with zip | Elastic hem



116, 128, 140, 152, 164
S, M, L, XL, XXL, 3XL, 4XL



9270D - WOMEN SIZES

S, M, L, XL

800 black, **900** seablue



9223 - POLYESTER TROUSERS POWER

Matt polyester tricot, 100 % polyester (recycled)

Calf insert: 90 % polyester (recycled), 10 % elastane

Side insert in honeycomb structure | Side pockets with zip | Elastic insert in the calf area | Hem with zip | Two-part elastic waistband with drawcord | Conical cut | Modern cut in ankle length for adult sizes

116, 128, 140, 152, 164

S, M, L, XL, XXL, 3XL, 4XL

34, 36, 38, 40, 42, 44

000 white, **105** red/white, **800** black,
802 black/white, **820** anthra light, **900** seablue



9289 - POLYESTER TROUSERS ALLROUND



Matt polyester tricot, 100 % polyester (recycled)

Side pockets with zip | Ribbed hem with zip | Two-part elastic waistband with drawcord

116, 128, 140, 152, 164
S, M, L, XL, XXL, 3XL, 4XL

800 black, **820** anthra light,
900 seablue, **904** seablue/neon yellow



9218 - POLYESTER TROUSERS COMPETITION 2.0

Shiny polyester tricot, 100 % polyester

Side pockets with zip | Ribbed hem with zip | Elastic waistband with drawcord

116, 128, 140, 152, 164
S, M, L, XL, XXL, 3XL, 4XL

01 wine red*, **08** black, **09** seablue, **18** navy/flame,
24 anthracite/turquoise*, **33** black/neon yellow,
89 seablue/neon yellow* | *While stocks last



9250 - POLYESTER TROUSERS CLASSICO

Shiny polyester tricot, 100 % polyester

Side pockets | Ribbed hem with zip | Elastic waistband with drawcord

104, 110, 116, 122, 128, 134,
140, 146, 152, 158, 164
S, M, L, XL, XXL, 3XL, 4XL

08 black, **09** seablue, **42** night blue

9250D - WOMEN SIZES

32, 34, 36, 38, 40, 42, 44, 46, 48

08 black, **09** seablue

9250S - SHORT SIZES

24, 25, 26, 27, 28, 29, 30

08 black, **09** seablue

9250L - LONG SIZES

94, 98, 102, 106, 110

08 black, **09** seablue



900



000

105

800

820

900

NEW
03/2025

8470 - TRAINING TROUSERS DYNAMIC

Stretch knit polyester
90 % polyester (recycled), 10 % elastane
Two-part elastic waistband with drawcord

116, 128, 140, 152, 164
S, M, L, XL, XXL, 3XL

FAIR

8470D - WOMEN SIZES

S, M, L, XL

800 black, **900** seablue

KEEP DRY

8423 - TRAINING TROUSERS POWER

Stretch knit polyester
90 % polyester (recycled), 10 % elastane

FAIR

Side insert in honeycomb structure |
Side pockets with zip | Hem with zip |
Two-part elastic waistband with drawcord |
Modern cut in ankle length for adult sizes

116, 128, 140, 152, 164
S, M, L, XL, XXL, 3XL

000 white, **105** red/white, **800** black,
802 black/white, **820** anthra light, **900** seablue

eamSPORT®
www.TeamSport-ID.com



820 900 904



09 24* 18* 33* 89*



09 42

8489 - TRAINING TROUSERS ALLROUND

Polyester terry, 100 % polyester (recycled)

Side pockets with zip | Hem with zip |
Two-part elastic waistband with drawcord

116, 128, 140, 152, 164
S, M, L, XL, XXL, 3XL, 4XL
34, 36, 38, 40, 42, 44

800 black, **820** anthra light,
900 seablue, **904** seablue/neon yellow



8495 - TRAINING TROUSERS ACTIVE

Polyester terry, 100 % polyester

Side pockets with zip | Hem with zip |
Elastic waistband with drawcord |
Ribbed insert on calf

116, 128, 140, 152, 164
S, M, L, XL, XXL, 3XL

08 black/white, **09** seablue/white, **18** navy/flame*,
24 anthracite/turquoise*, **33** black/neon yellow*,
89 seablue/neon yellow* | *While stocks last

8450 - TRAINING TROUSERS CLASSICO

Polyester piqué, 100 % polyester

Side pockets with zip | Hem with zip |
Elastic waistband with drawcord |
Ribbed insert on calf

104, 110, 116, 122, 128, 134,
140, 146, 152, 158, 164
S, M, L, XL, XXL, 3XL

08 black, **09** seablue, **42** night blue

8450S - SHORT SIZES

24, 25, 26, 27, 28, 29, 30

08 black, **09** seablue

8450L - LONG SIZES

94, 98, 102, 106, 110

08 black, **09** seablue





900



000



100



800



820



900

NEW
03/2025

8570 - TRAINING SHORTS DYNAMIC

Polyester piquet, 100 % polyester (recycled)



Two-part elastic waistband with drawcord

116, 128, 140, 152, 164
S, M, L, XL, XXL, 3XL



8570D - WOMEN SIZES

S, M, L, XL

800 black, **900** seablue



6223 - SHORTS POWER

Polyester interlock, 100 % polyester (recycled)



Side insert in honeycomb structure | Extra deep side pockets (appropriate for tennis balls) | Two-part elastic waistband with drawcord

128, 140, 152, 164
S, M, L, XL, XXL, 3XL, 4XL
34, 36, 38, 40, 42, 44

000 white, **100** red, **800** black, **802** black/white, **820** anthra light, **900** seablue



8595 - TRAINING SHORTS ACTIVE

Polyester terry, 100 % polyester
Side pockets | Elastic waistband with drawcord

128, 140, 152, 164
S, M, L, XL, XXL, 3XL

08 black/white, **09** seablue/white,
18 navy/flame, **24*** anthracite/turquoise*,
33 black/neon yellow, **89** seablue/neon yellow*
| *While stocks last



8589 - TRAINING SHORTS ALLROUND

Stretch knit polyester
90 % polyester (recycled), 10 % elastane

Side pockets with zip | Two-part elastic
waistband with drawcord

128, 140, 152, 164
S, M, L, XL, XXL, 3XL
34, 36, 38, 40, 42, 44

800 black, **820** anthra light,
900 seablue, **904** seablue/neon yellow




900

900

NEW 03|2025 **6570 - WOVEN TROUSERS DYNAMIC**

Stretch micro twill, 100 % polyester (recycled)

 Elastic material without lining | Side pockets with zip | Elastic hem

S, M, L, XL, XXL, 3XL, 4XL

FAIR **6570D - WOMEN SIZES**

S, M, L, XL

800 black, **900** seablue

NEW 03|2025 **6670 - LEISURE TROUSERS DYNAMIC**

Polyester interlock, 100 % polyester (recycled)

 Side pockets with zip | Elastic hem

116, 128, 140, 152, 164
S, M, L, XL, XXL, 3XL

FAIR **6670D - WOMEN SIZES**

S, M, L, XL

800 black, **900** seablue

TeamSport-iD.com



6523 - LEISURE TROUSERS POWER

Stretch micro twill, 100 % polyester (recycled)

Side insert in honeycomb structure | Elastic material without lining | Side pockets | Additional side pocket with concealed zip | Hem with elastic insert | Elastic waistband with drawcord and JAKO branding | Modern cut in ankle length for adult sizes



128, 140, 152, 164
S, M, L, XL, XXL, 3XL, 4XL
34, 36, 38, 40, 42, 44

000 white, **105** red/white, **800** black,
802 black/white, **820** anthra light, **900** seablue



6589 - PRESENTATION TROUSERS ALLROUND

Stretch micro twill, 100 % polyester (recycled)

Elastic material without lining | Side pockets with zip | Ribbed hem | Two-part elastic waistband with drawcord



128, 140, 152, 164
S, M, L, XL, XXL, 3XL, 4XL
34, 36, 38, 40, 42, 44

800 black, **820** anthra light,
900 seablue, **904** seablue/neon yellow



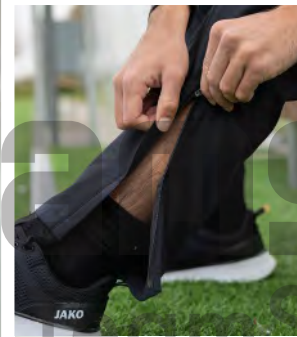
6599 - PRESENTATION TROUSERS TEAM

Stretch micro twill, 100 % polyester

Side pockets with zip | Elastic material without lining | Two-part elastic waistband with drawcord | Ribbed hem

116, 128, 140, 152, 164
S, M, L, XL, XXL, 3XL, 4XL
34, 36, 38, 40, 42, 44

800 black, **900** seablue



6507 - PRESENTATION TROUSERS PROFI

Stretch micro twill, 100 % polyester

Lining: 100 % polyester

Inner mesh lining | Side seam with continuous zip |
Side pockets with zip | Elastic waistband

S, M, L, XL, XXL, 3XL
34, 36, 38, 40, 42, 44, 46

SHORT SIZES

Men: 24, 25, 26, 27, 28, 29, 30
Women: 18, 19, 20, 21, 22, 23

08 black



6550 - PRESENTATION TROUSERS CLASSICO

Micro twill, 100 % polyester

Lining: 100 % polyester

Inner mesh lining | Side pockets with zip |
Hem with zip | Elastic waistband with drawcord

128, 140, 152, 164
S, M, L, XL, XXL, 3XL, 4XL

08 black, 09 seablue, 21 anthracite, 42 night blue

6550D - WOMEN SIZES

34, 36, 38, 40, 42, 44, 46, 48
08 black, 09 seablue, 21 anthracite

6550S - SHORT SIZES

Men: 24, 25, 26, 27, 28, 29, 30
Women: 18, 19, 20, 21, 22, 23

08 black, 09 seablue

6550L - LONG SIZES

Men: 94, 98, 102, 106, 110
Women: 76, 80, 84, 88

08 black, 09 seablue



Side view



Side view



NEW 03/2025 **6270 - WOVEN SHORTS DYNAMIC**

Stretch micro twill, 100 % polyester (recycled)



Elastic material without lining | Side pockets |
Two-part elastic waistband with drawcord

S, M, L, XL, XXL, 3XL, 4XL



6270D - WOMEN SIZES

S, M, L, XL

800 black, 900 seablue

NEW 03/2025 **8370 - LEISURE SHORTS DYNAMIC**

Polyester interlock, 100 % polyester (recycled)



Side pockets with zip

116, 128, 140, 152, 164

S, M, L, XL, XXL, 3XL



8370D - WOMEN SIZES

S, M, L, XL

800 black, 900 seablue



08



08



09

21

42



00

09



6250 - SHORTS CLASSICO

Stretch micro twill, 100 % polyester

Side pockets | Elastic waistband with drawcord

116, 128, 140, 152, 164

S, M, L, XL, XXL, 3XL, 4XL

08 black, **09** seablue,
21 anthracite, **42** night blue



6208 - SHORTS PROFI 2.0

Stretch micro twill, 100 % polyester

Without inner slip | Side pockets with zip |
Elastic waistband with drawcord

128, 140, 152, 164

S, M, L, XL, XXL, 3XL, 4XL

34, 36, 38, 40, 42, 44

00 white, **08** black, **09** seablue



09 24 18 33 89



6218 - SHORTS COMPETITION 2.0

Stretch micro twill, 100 % polyester

Side pockets with zip |
Elastic waistband with drawcord

128, 140, 152, 164
S, M, L, XL, XXL, 3XL, 4XL
34/36, 38/40, 42/44

08 black, **09** seablue, **18** navy/flame,
24 anthracite/turquoise, **33** black/neon yellow,
89 seablue/neon yellow



820 900 904



6289 - SHORTS ALLROUND

Stretch micro twill, 100 % polyester (recycled)

Side pockets with zip | Two-part
elastic waistband with drawcord



128, 140, 152, 164
S, M, L, XL, XXL, 3XL, 4XL
34, 36, 38, 40, 42, 44

800 black, **820** anthra light,
900 seablue, **904** seablue/neon yellow



www.TeamSport-iD.com



**6565 - JOGGING TROUSERS
BASE WITH CUFFS**

French terry, 70 % cotton (organic),
30 % polyester (recycled)
Col. 41: 60 % cotton (organic),
34 % polyester (recycled), 6 % viscose
Cotton from controlled organic cultivation |
Pre-shrunk | Side pockets | Elastic
waistband with drawcord | Ribbed hem

128, 140, 152, 164
S, M, L, XL, XXL, 3XL, 4XL

6565D - WOMEN SIZES

34, 36, 38, 40, 42, 44

08 black, 09 seablue, 41 light grey melange



**8465 - JOGGING TROUSERS
BASE**

French terry, 70 % cotton (organic),
30 % polyester (recycled)
Col. 41: 60 % cotton (organic),
34 % polyester (recycled), 6 % viscose
Cotton from controlled organic cultivation |
Pre-shrunk | Side pockets with zip |
Elastic waistband with drawcord

128, 140, 152, 164
S, M, L, XL, XXL, 3XL, 4XL

8465D - WOMEN SIZES

34, 36, 38, 40, 42, 44

08 black, 09 seablue, 41 light grey melange



**8429 - JOGGING TROUSERS
PREMIUM BASICS**

Double tech knit, 81 % polyester,
14 % viscose, 5 % elastane
Melange look | Side pockets with zip |
Elastic waistband with drawcord |
Cotton touch | Breathable interlock
on inner side

S, M, L, XL, XXL, 3XL, 4XL
34, 36, 38, 40, 42, 44

21 anthracite melange, 28 khaki melange,
40 light grey melange, 49 seablue melange



**6545 - JOGGING TROUSERS
PRO CASUAL**

Soft doubleface polyester
77 % polyester (46 % recycled),
18 % viscose, 5 % elastane
Side pockets with zip and
JAKO branding | Soft touch

S, M, L, XL, XXL, 3XL
34, 36, 38, 40, 42, 44

800 black, 855 ash grey, 900 seablue



Side view



09 41



28 40 49



800 900

TeamSport-ID
www.TeamSport-ID.com



8565 - JOGGING SHORTS BASE

French terry, 70 % cotton (organic), 30 % polyester (recycled)
Col. 41: 60 % cotton (organic), 34 % polyester (recycled), 6 % viscose
 Cotton from controlled organic cultivation | Pre-shrunk | Side pockets with zip | Elastic waistband with drawcord

128, 140, 152, 164
 S, M, L, XL, XXL, 3XL, 4XL

8565D - WOMEN SIZES

34, 36, 38, 40, 42, 44

08 black, **09** seablue, **41** light grey melange



8529 - SHORTS PREMIUM BASICS

Double tech knit
 81 % polyester, 14 % viscose, 5 % elastane
 Melange look | Side pockets with zip | Elastic waistband with drawcord | Cotton touch | Breathable interlock on inner side

S, M, L, XL, XXL, 3XL, 4XL
 34, 36, 38, 40, 42, 44

21 anthracite melange, **28** khaki melange, **40** light grey melange, **49** seablue melange



6245 - SHORTS PRO CASUAL

Soft doubleface polyester
 77 % polyester (46 % recycled), 18 % viscose, 5 % elastane
 Side pockets with zip and JAKO branding | Soft touch

S, M, L, XL, XXL, 3XL, 4XL

800 black, **855** ash grey, **900** seablue

JERSEY DYNAMIC

4270 | p. 146
Available until 2028

JERSEY VINTAGE

4245 | p. 148
Available until 2028

JERSEY GLORY

4251 | p. 150
Available until 2028

JERSEY ICONIC

4224 | p. 152
Available until 2027

JERSEY WILD

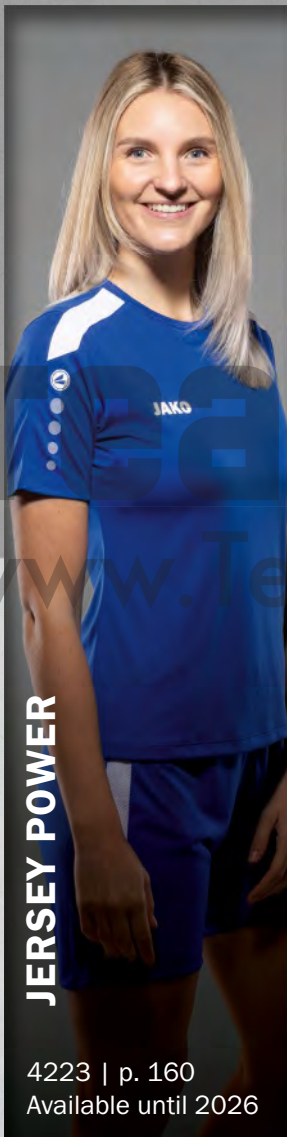
4244 | p. 154
Available until 2026

JERSEY PIXEL

4241 | p. 156
Available until 2026



4242 | p. 158
Available until 2026



4223 | p. 160
Available until 2026



4212 | p. 164
Available until 2025



4214 | p. 166
Available until 2025

JERSEYS



4215 | p. 168
Available until 2026



4233 | p. 162
Available until 2030





4245 | p. 148 4245 | p. 148 4233 | p. 162 4224 | p. 152 4233 | p. 162 4223 | p. 160 4212 | p. 164



4224 | p. 152 4215 | p. 168 4242 | p. 158 4214 | p. 166 4223 | p. 160 4223 | p. 160 4245 | p. 148 4245 | p. 148



4214 | p. 166 4242 | p. 158 4270 | p. 146 4233 | p. 162 4270 | p. 146 4245 | p. 148 4224 | p. 152



4244 | p. 154 4270 | p. 146 4215 | p. 168 4245 | p. 148 4214 | p. 166 4241 | p. 156 4242 | p. 158



4251 | p. 150 4212 | p. 164 4223 | p. 160 4251 | p. 150 4212 | p. 164 4251 | p. 150 4223 | p. 160



4244 | p. 154 4214 | p. 166 4241 | p. 156



4214 | p. 166 4214 | p. 166 4224 | p. 152 4223 | p. 160

YOUR CLUB YOUR COLOUR

Choose from more than 130 models the suitable jersey for your club or create your individual design in the JAKO TeamCreator:

www.TeamSport-iD.com



DESIGN BEYOND LIMITS



250



Back view



Side view



Underwear starting on page 198

www.sport-id.com

NEW 03/2025 **4270 - JERSEY DYNAMIC S/S**
 Polyester micro mesh, 100 % polyester (recycled)
 Contrasting details on collar and sleeve ending



KEEP DRY

116, 128, 140, 152, 164
 S, M, L, XL, XXL, 3XL



FAIR

4270D - WOMEN SIZES

S, M, L, XL

027 white/black/anthracite, **114** red/white/dark red,
190 coral/white/seablue, **205** dark green/white/green,
250 mint/white/seablue, **305** yellow/white/black,
405 royal/white/seablue, **431** sky blue/white/seablue,
826 black/white/anthracite, **837** light grey/white/grey,
918 seablue/white/sky blue, **921** night blue/white/light grey



4400 - SHORTS MANCHESTER 2.0

Polyester interlock, 100 % polyester
Without inner slip | Elastic waistband with drawcord

104, 116, 128, 140, 152, 164
S, M, L, XL, XXL, 3XL

00 white, **01** sport red, **04** sport royal, **08** black,
45 sky blue, **90** seablue, **207** dark green, **335** yellow
| additional colours on p. 176

4400D - WOMEN SIZES

34/36, 38/40, 42/44

00 white, **01** sport red, **04** sport royal, **08** black



3870 - SOCKS DYNAMIC

97 % polyester (recycled), 3 % elastane



Ribbed structure on ankle | Wide ribbed cuff |
With JAKO logo

1 (27-30), 2 (31-34), 3 (35-38),
4 (39-42), 5 (43-46), 6 (47-50)

000 white, **100** red, **207** dark green, **251** mint,
335 yellow, **365** coral, **400** royal, **430** sky blue,
800 black, **825** grey, **900** seablue, **919** night blue

SOCKS

3470 - Tube Socks DYNAMIC | p. 179

TEAMSPORT-ID
www.TeamSport-ID.com



www.TeamSport-iD.com

028



Back view



Side view



Underwear starting on page 198

NEW
04/2025

4245 - JERSEY VINTAGE S/S

Polyester jacquard, 100 % polyester (recycled)



With honeycomb on the back |
Collar with V-Neck



128, 140, 152, 164
S, M, L, XL, XXL

028 white/red, **029** white/green, **031** white/royal,
033 white/black, **038** white/turquoise, **104** red/royal,
162 fuchsia/purple, **336** yellow/royal, **337** yellow/black



4400 - SHORTS MANCHESTER 2.0

Polyester interlock, 100 % polyester
Without inner slip | Elastic waistband with drawcord

104, 116, 128, 140, 152, 164
S, M, L, XL, XXL, 3XL

00 white, **01** sport red, **04** sport royal, **06** sport green,
08 black, **10** purple | additional colours on p. 176

4400D - WOMEN SIZES

34/36, 38/40, 42/44

00 white, **01** sport red, **04** sport royal, **08** black



3899 - SOCKS ALLROUND

72 % polyester (recycled), 20 % cotton (organic),
6 % elastane, 2 % polyamide

Ribbed structure on ankle | Elastic compression
waistband | Cotton heel and toe area for more
comfort | With JAKO logo | JAKO dots on calf

1 (27-30), 2 (31-34), 3 (35-38),
4 (39-42), 5 (43-46), 6 (47-50)

000 white, **110** sport red, **200** sport green,
410 sport royal, **800** black | additional colours on p. 181

SOCKS

3414 - Stirrups GLASGOW 2.0 | p. 180
*1 3814 - Socks GLASGOW 2.0 | p. 180



Back view



Side view



Underwear starting on page 198

TRANSPORT-ID
 sport-ID.com

NEW
 04/2025

4251 - JERSEY GLORY S/S

Polyester micromesh, 100 % polyester (recycled)



With structure on the back | Contrasting details on collar and sleeve ending | Polo collar



S, M, L, XL, XXL

001 white/black, **007** white/seablue, **028** white/red, **105** red/white, **206** dark green/white, **337** yellow/black, **406** royal/white, **802** black/white, **936** navy/gold



4400 - SHORTS MANCHESTER 2.0

Polyester interlock, 100 % polyester
Without inner slip | Elastic waistband with drawcord

104, 116, 128, 140, 152, 164
S, M, L, XL, XXL, 3XL

00 white, **01** sport red, **04** sport royal, **08** black,
90 seablue, **207** dark green, **335** yellow
| additional colours on p. 176

4400D - WOMEN SIZES

34/36, 38/40, 42/44

00 white, **01** sport red, **04** sport royal, **08** black



3899 - SOCKS ALLROUND

72 % polyester (recycled), 20 % cotton (organic),
6 % elastane, 2 % polyamide

Ribbed structure on ankle | Elastic compression
waistband | Cotton heel and toe area for more
comfort | With JAKO logo | JAKO dots on calf

1 (27-30), 2 (31-34), 3 (35-38),
4 (39-42), 5 (43-46), 6 (47-50)

000 white, **110** sport red, **410** sport royal, **800** black,
930 navy | additional colours on p. 181

SHORTS & SOCKS

Shorts:
*1 4499 - Shorts ALLROUND | p. 175
Socks:
3414 - Stirrups GLASGOW 2.0 | p. 180
*2 3814 - Socks GLASGOW 2.0 | p. 180



Back view



Side view



Underwear starting on page 198

TeamSport-ID
www.TeamSport-ID.com



4224 - JERSEY ICONIC S/S

Polyester interlock, 100 % polyester (recycled)
Jacquard insert | Ribbed collar



116, 128, 140, 152, 164
S, M, L, XL, XXL, 3XL

- 014** white/black/neon green, **016** white/soft grey/antra light,
- 017** white/sport royal/neon orange, **113** sport red/wine red,
- 171** dusky pink/soft grey/antra light, **222** soft green/sport green,
- 238** mint green/soft grey/antra light, **326** soft yellow/black,
- 351** neon orange/black, **414** sport royal/seablue,
- 444** JAKO blue/seablue/neon yellow, **457** light blue/wine red,
- 801** black/antracite, **805** black/pink/neon yellow,
- 938** navy/chili red, **939** navy/seablue/gold



4400 - SHORTS MANCHESTER 2.0

Polyester interlock, 100 % polyester

Without inner slip | Elastic waistband with drawcord

104, 116, 128, 140, 152, 164

S, M, L, XL, XXL, 3XL

00 white, **01** sport red, **04** sport royal, **06** sport green, **08** black, **09** navy, **19** neon orange, **21** anthracite, **40** stone grey, **89** JAKO blue, **90** seablu
| additional colours on p. 176

4400D - WOMEN SIZES

34/36, 38/40, 42/44

00 white, **01** sport red, **04** sport royal, **08** black, **09** navy, **21** anthracite



3899 - SOCKS ALLROUND

72 % polyester (recycled), 20 % cotton (organic),
6 % elastane, 2 % polyamide

Ribbed structure on ankle | Elastic compression waistband |
Cotton heel and toe area for more comfort | With JAKO logo |
JAKO dots on calf

1 (27-30), 2 (31-34), 3 (35-38),
4 (39-42), 5 (43-46), 6 (47-50)

000 white, **110** sport red, **200** sport green,
350 neon orange, **410** sport royal, **440** JAKO blue,
800 black, **830** anthracite, **840** stone grey, **930** navy
| additional colours on p. 181

SHORTS & SOCKS

Shorts:

*1 4499 - Shorts ALLROUND | p. 175

Socks:

3414 - Stirrups GLASGOW 2.0 | p. 180
*2 3814 - Socks GLASGOW 2.0 | p. 180



Back view



Side view



Underwear starting on page 198



KEEP DRY

4244 - JERSEY WILD S/S

Stretch jersey, 90 % polyester (recycled), 10 % elastane

Dynamic print design on sleeves | Ribbed collar |

Sleeve ends with wide ribbed cuffs | Body-contoured fit



FAIR

Customization: Use sublimation stop foil only

S, M, L, XL, XXL

010 white/silver grey, **112** sport red/white, **202** sport green/white,

303 citro/white, **412** sport royal/white, **802** black/white,

842 stone grey/white, **937** navy/sky blue



010

00

000



112

01

110



202

06

200



303

03

300



412

04

410



802

08

800



842

40

840



937

09

930



4400 - SHORTS MANCHESTER 2.0

Polyester interlock, 100 % polyester

Without inner slip | Elastic waistband with drawcord

104, 116, 128, 140, 152, 164

S, M, L, XL, XXL, 3XL

00 white, **01** sport red, **03** citro, **04** sport royal, **06** sport green,
08 black, **09** navy, **21** anthracite, **40** stone grey

| additional colours on p. 176

4400D - WOMEN SIZES

34/36, 38/40, 42/44

00 white, **01** sport red, **04** sport royal, **08** black, **09** navy, **21** anthracite



3899 - SOCKS ALLROUND

72 % polyester (recycled), 20 % cotton (organic),
6 % elastane, 2 % polyamide

Ribbed structure on ankle | Elastic compression waistband |
Cotton heel and toe area for more comfort | With JAKO logo |
JAKO dots on calf

1 (27-30), 2 (31-34), 3 (35-38),
4 (39-42), 5 (43-46), 6 (47-50)

000 white, **110** sport red, **200** sport green, **300** citro,
350 neon orange, **410** sport royal, **430** sky blue, **440** JAKO blue,
800 black, **830** anthracite, **840** stone grey, **930** navy

TeamSport-ID.com



®

TeamSport-ID
www.TeamSport-ID.com



Back view



Side view



Underwear starting on page 198



4241 - JERSEY PIXEL S/S

Polyester interlock, 100 % polyester (recycled)

Pixel design on body | Ribbed collar |

Sleeve ends with wide ribbed cuffs



Customization: Use sublimation stop foil only

128, 140, 152, 164

S, M, L, XL, XXL

000 white, **110** sport red, **220** soft green, **316** bright yellow,

410 sport royal, **455** light blue, **800** black, **840** stone grey



000
00
000



110
01
110



220
08
800



316
21
830



410
04
410



455
09
930



800
08
800



840
21
830



4400 - SHORTS MANCHESTER 2.0

Polyester interlock, 100 % polyester
Without inner slip | Elastic waistband with drawcord

104, 116, 128, 140, 152, 164
S, M, L, XL, XXL, 3XL

00 white, **01** sport red, **04** sport royal, **06** sport green, **08** black,
09 navy, **21** anthracite, **40** stone grey | additional colours on p.176

4400D - WOMEN SIZES

34/36, 38/40, 42/44

00 white, **01** sport red, **04** sport royal, **08** black,
09 navy, **21** anthracite



3899 - SOCKS ALLROUND

72 % polyester (recycled), 20 % cotton (organic),
6 % elastane, 2 % polyamide

Ribbed structure on ankle | Elastic compression waistband |
Cotton heel and toe area for more comfort | With JAKO logo |
JAKO dots on calf

1 (27-30), 2 (31-34), 3 (35-38),
4 (39-42), 5 (43-46), 6 (47-50)

000 white, **110** sport red, **200** sport green, **410** sport royal,
800 black, **830** anthracite, **840** stone grey, **930** navy

| additional colours on p.181



111



Back view



Side view



Underwear starting on page 198



4242 - JERSEY ANIMAL S/S

Polyester interlock, 100 % polyester (recycled)
Dynamic print design on body | Ribbed collar



Customization: Use sublimation stop foil only

116, 128, 140, 152, 164
S, M, L, XL, XXL

014 white/black/neon green, **111** sport red/black,
201 sport green/black, **301** citro/black,
351 neon orange/black, **411** sport royal/black,
442 JAKO blue/seablue, **831** anthracite/black



4400 - SHORTS MANCHESTER 2.0

Polyester interlock, 100 % polyester
Without inner slip | Elastic waistband with drawcord

104, 116, 128, 140, 152, 164
S, M, L, XL, XXL, 3XL

00 white, **01** sport red, **03** citro, **04** sport royal, **06** sport green, **08** black, **19** neon orange, **21** anthracite, **89** JAKO blue | additional colours on p. 176

4400D - WOMEN SIZES

34/36, 38/40, 42/44

00 white, **01** sport red, **04** sport royal, **08** black, **09** navy, **21** anthracite



3899 - SOCKS ALLROUND

72 % polyester (recycled), 20 % cotton (organic),
6 % elastane, 2 % polyamide

Ribbed structure on ankle | Elastic compression
waistband | Cotton heel and toe area for more
comfort | With JAKO logo | JAKO dots on calf

1 (27-30), 2 (31-34), 3 (35-38),
4 (39-42), 5 (43-46), 6 (47-50)

000 white, **110** sport red, **200** sport green, **300** citro,
350 neon orange, **410** sport royal, **440** JAKO blue, **800** black
| additional colours on p. 181

SOCKS

3414 - Stirrups GLASGOW 2.0 | p. 180



485



Back view



Side view



Underwear starting on page 198



4223 - JERSEY POWER S/S

Polyester interlock, 100 % polyester (recycled)

Contrast insert in honeycomb structure



116, 128, 140, 152, 164

S, M, L, XL, XXL, 3XL, 4XL

34, 36, 38, 40, 42, 44

000 white, **004** white/red, **100** red, **200** sport green, **210** neon green,

302 citro/red, **304** citro/royal, **375** flame/seablue, **400** royal,

485 purple, **800** black, **803** black/citro, **840** stone grey,

846 soft grey/neon orange, **900** seablue, **910** seablue/sky blue



4423 - SHORTS POWER

Polyester interlock, 100 % polyester (recycled)
 Contrast insert in honeycomb structur | Without inner slip | Elastic waistband with drawcord



116, 128, 140, 152, 164
 S, M, L, XL, XXL

000 white, **105** red/white, **200** sport green, **210** neon green,
375 flame/seablue, **400** royal, **404** royal/citro, **800** black,
803 black/citro, **840** stone grey, **900** seablue, **910** seablue/sky blue

3808 - SOCKS ROMA

79 % polyester, 18 % cotton, 3 % elastane
 Wide ribbed cuff | Ribbed structure on ankle | Cotton padded footbed | JAKO dots on calf

3 (35-38), 4 (39-42), 5 (43-46)

00 white, **01** sport red, **04** sport royal, **06** sport green,
08 black, **09** navy, **30** citro, **45** sky blue
 | additional colours on p. 184

SHORTS & SOCKS

Shorts:
 *1 4400 - Shorts MANCHESTER 2.0 | p. 176
Socks:
 3408 - Stirrups ROMA | p. 184
 *2 3814 - Socks GLASGOW 2.0 | p. 180
 *3 3414 - Stirrups GLASGOW 2.0 | p. 180



00



Back view



Underwear starting on page 198

www.TeamSport-ID.com



4233 - JERSEY TEAM S/S

Polyester interlock, 100 % polyester (recycled)
Modern plain look | Ribbed collar



104, 116, 128, 140, 152, 164
S, M, L, XL, XXL, 3XL

4233D - WOMEN SIZES

34, 36, 38, 40, 42, 44

00 white, **01** sport red, **03** citro, **04** sport royal,
06 sport green, **08** black, **09** navy, **18** flame, **23** lime,
25 neon green, **40** stone grey, **89** JAKO blue,
170 deep pink, **251** mint, **365** coral, **485** purple



4400 - SHORTS MANCHESTER 2.0

Polyester interlock, 100 % polyester
Without inner slip | Elastic waistband with drawcord

104, 116, 128, 140, 152, 164
S, M, L, XL, XXL, 3XL

00 white, 01 sport red, 03 citro, 04 sport royal, 06 sport green, 08 black, 09 navy, 10 purple, 19 neon orange, 21 anthracite, 40 stone grey, 45 sky blue, 89 JAKO blue | additional colours on p. 176

4400D - WOMEN SIZES

34/36, 38/40, 42/44

00 white, 01 sport red, 04 sport royal, 08 black, 09 navy, 21 anthracite

3814 - SOCKS GLASGOW 2.0

67 % polyester, 31 % cotton, 2 % elastane
Mesh insert on calf | Ribbed structure on ankle | Wide ribbed cuff | Cotton foot | With JAKO logo

1 (27-30), 2 (31-34), 3 (35-38), 4 (39-42), 5 (43-46), 6 (47-50)

00 white, 01 sport red, 04 sport royal, 06 sport green, 08 black, 09 navy, 10 purple, 18 flame, 19 neon orange, 21 anthracite, 25 neon green, 30 citro, 40 stone grey, 45 sky blue, 89 JAKO blue | additional colours on p. 180

SOCKS

3414 - Stirrups GLASGOW 2.0 | p. 180



410



®



Back view



Side view



Underwear starting on page 198



4212 - JERSEY PRIMERA S/S

Polyester interlock, 100 % polyester

Contrasting lateral insert

116, 128, 140, 152, 164

S, M, L, XL, XXL

000 white, **011** white/sport red, **110** sport red, **200** sport green,

300 citro, **371** flame/navy, **410** sport royal, **430** sky blue,

480 lilac, **800** black, **845** soft grey/stone grey, **934** navy/indigo



4400 - SHORTS MANCHESTER 2.0

Polyester interlock, 100 % polyester
Without inner slip | Elastic waistband with drawcord

104, 116, 128, 140, 152, 164
S, M, L, XL, XXL, 3XL

00 white, **01** sport red, **03** citro, **04** sport royal, **06** sport green,
08 black, **09** navy, **40** stone grey, **45** sky blue
| additional colours on p. 176

4400D - WOMEN SIZES

34/36, 38/40, 42/44

00 white, **01** sport red, **04** sport royal, **08** black, **09** navy
| additional colours on p. 176

3814 - SOCKS GLASGOW 2.0

67 % polyester, 31 % cotton, 2 % elastane
Mesh insert on calf | Ribbed structure on ankle |
Wide ribbed cuff | Cotton foot | With JAKO logo

1 (27-30), 2 (31-34), 3 (35-38),
4 (39-42), 5 (43-46), 6 (47-50)

00 white, **01** sport red, **04** sport royal, **06** sport green, **08** black,
09 navy, **18** flame, **30** citro, **40** stone grey, **45** sky blue
| additional colours on p. 180

SOCKS

3414 - Stirrups GLASGOW 2.0 | p. 180



®

ret-id.com

Back view

Side view

Underwear starting on page 198



4214 - JERSEY CELTIC MELANGE S/S

Polyester interlock, 100 % polyester (recycled)
Ribbed collar | Sleeves end with wide ribbed cuffs



Customization: Use sublimation stop foil only

116, 128, 140, 152, 164
S, M, L, XL, XXL

003 white/stone grey, **110** sport red, **200** sport green, **300** citro,
410 sport royal, **800** black, **809** black/sport red,
833 anthracite/lemon, **840** stone grey, **936** navy/gold



4499 - SHORTS ALLROUND

Polyester interlock, 100 % polyester (recycled)

Without inner slip | Elastic waistband with drawcord | Side contrast insert



116, 128, 140, 152, 164
S, M, L, XL, XXL

000 white, **110** sport red, **200** sport green, **410** sport royal,
800 black, **803** black/citro, **809** black/sport red,
833 anthracite/lemon, **840** stone grey, **936** navy/gold

| additional colours on p. 175



3899 - SOCKS ALLROUND

72 % polyester (recycled), 20 % cotton (organic),
6 % elastane, 2 % polyamide

Ribbed structure on ankle | Elastic compression waistband |
Cotton heel and toe area for more comfort | With JAKO logo |
JAKO dots on calf

1 (27-30), 2 (31-34), 3 (35-38),
4 (39-42), 5 (43-46), 6 (47-50)

000 white, **110** sport red, **200** sport green, **300** citro, **410** sport royal,
800 black, **830** anthracite, **840** stone grey, **930** navy

| additional colours on p. 181



432



Back view



Side view



Underwear starting on page 198

www.TecnSportiD.com



4215 - JERSEY INTER S/S

Polyester interlock, 100 % polyester (recycled)
Back made of micro mesh



Customization: Use sublimation stop foil only

128, 140, 152, 164
S, M, L, XL, XXL

011 white/sport red, **012** white/sport royal, **013** white/sport green,
111 sport red/black, **352** neon orange/white, **432** sky blue/white,
801 black/antracite, **803** black/citro, **814** black/white/silver,
935 navy/white/flame



011

110

110



012

410

410



013

200

200



111

809

800



352

350

350



432

430

430



801

800

800



803

803

300



814

800

800



935

932

930



4499 - SHORTS ALLROUND

Polyester interlock, 100 % polyester (recycled)

Without inner slip | Elastic waistband with drawcord | Side contrast insert



116, 128, 140, 152, 164
S, M, L, XL, XXL

110 sport red, **200** sport green, **350** neon orange,
410 sport royal, **430** sky blue, **800** black,
803 black/citro, **809** black/sport red, **932** navy/flame

| additional colours on p. 175



3899 - SOCKS ALLROUND

72 % polyester (recycled), 20 % cotton (organic),
6 % elastane, 2 % polyamide

Ribbed structure on ankle | Elastic compression waistband |
Cotton heel and toe area for more comfort | With JAKO logo |
JAKO dots on calf

1 (27-30), 2 (31-34), 3 (35-38),
4 (39-42), 5 (43-46), 6 (47-50)

000 white, **110** sport red, **200** sport green, **300** citro, **350** neon orange,
410 sport royal, **430** sky blue, **800** black, **830** anthracite, **930** navy

| additional colours on p. 181



4315 - JERSEY INTER L/S

Polyester interlock, 100 % polyester (recycled)
 Back made of micro mesh | Until end of 2025



Customization: Use sublimation stop foil only

116, 128, 140, 152, 164
 S, M, L, XL, XXL

011 white/sport red, **012** white/sport royal, **013** white/sport green,
111 sport red/black, **352** neon orange/white, **432** sky blue/white,
801 black/anthracite, **803** black/citro, **814** black/white/silver,
935 navy/white/flame



KEEP DRY

4333 - JERSEY TEAM L/S

Polyester interlock, 100 % polyester (recycled)

Modern plain look | Ribbed collar |

Ribbed cuffs | Until end of 2030



FAIR

116, 128, 140, 152, 164

S, M, L, XL, XXL, 3XL

00 white, **01** sport red, **03** citro, **04** sport royal,**06** sport green, **08** black, **18** flame



4151 - REVERSIBLE JERSEY CHANGE 2.0

100 % polyester

Contrast colour on inside | Reversible

XXS, XS
S, M, L, XL, XXL, 3XL

01 sport red/white, **03** black/citro, **04** royal/white,
06 sport green/white, **08** black/stone grey



4451 - REVERSIBLE SHORTS CHANGE 2.0

100 % polyester

Contrast colour on inside | Reversible |
Elastic waistband with drawcord

XXS, XS
S, M, L, XL, XXL, 3XL

01 sport red/white, **03** black/citro, **04** royal/white,
06 sport green/white, **08** black/stone grey

SOCKS

Suitable socks from p. 245

**4150 - JERSEY CENTER 2.0**

Polyester jacquard, 100 % polyester
Collar and armhole with design element in contrast colours

XXS, XS
S, M, L, XL, XXL, 3XL

00 white/black, **01** sport red/white, **03** citro/black,
04 royal/white, **06** sport green/white, **08** black/white

**4250 - SHOOTING SHIRT CENTER 2.0**

Polyester jacquard, 100 % polyester
Collar and sleeve ends with design element in contrast colours

XXS, XS
S, M, L, XL, XXL, 3XL

00 white/black, **01** sport red/white, **03** citro/black,
04 royal/white, **06** sport green/white, **08** black/white

**4450 - SHORTS CENTER 2.0**

Polyester jacquard, 100 % polyester
Shorts hem with design element in contrast colours | Elastic waistband with drawcord

XXS, XS
S, M, L, XL, XXL, 3XL

00 white/black, **01** sport red/white, **03** citro/black,
04 royal/white, **06** sport green/white, **08** black/white



TEAMSPORT-ID
www.TeamSport-ID.com

SHORTS



4423 - SHORTS POWER

Polyester interlock, 100 % polyester (recycled)
Without inner slip | Elastic waistband with drawcord |
Contrast insert in honeycomb structure



116, 128, 140, 152, 164
S, M, L, XL, XXL

000 white, **105** red/white, **200** sport green, **210** neon green,
375 flame/seablue, **400** royal, **404** royal/citro, **800** black,
803 black/citro, **840** stone grey, **900** seablue, **910** seablue/sky blue



4499 - SHORTS ALLROUND

Polyester interlock, 100 % polyester (recycled)
Without inner slip | Elastic waistband
with drawcord | Side contrast insert



116, 128, 140, 152, 164
S, M, L, XL, XXL

000 white, **110** sport red, **200** sport green, **350** neon orange,
410 sport royal, **430** sky blue, **800** black, **803** black/citro,
809 black/sport red, **833** anthracite/lemon, **840** stone grey,
932 navy/flame, **936** navy/gold



45

NEW COLOURS



00

01

03

04

09

06

08

10

19

21

40

89

90

207

251

335

365



4400 - SHORTS MANCHESTER 2.0

Polyester interlock, 100 % polyester

Without inner slip | Elastic waistband with drawcord

104, 116, 128, 140, 152, 164

S, M, L, XL, XXL, 3XL

00 white, **01** sport red, **03** citro, **04** sport royal, **06** sport green, **08** black, **09** navy, **10** purple, **19** neon orange, **21** anthracite, **40** stone grey, **45** sky blue, **89** JAKO blue, **90** seablue, **207** dark green, **251** mint, **335** yellow, **365** coral

4400D - WOMEN SIZES

34/36, 38/40, 42/44

00 white, **01** sport red, **04** sport royal, **08** black, **09** navy, **21** anthracite



4403 - SHORTS ANDERLECHT 2.0

Polyester interlock, 100 % polyester

Inner slip: 100 % polyester

With inner slip | Elastic waistband with drawcord

116, 128, 140, 152, 164

S, M, L, XL, XXL

00 white, **01** sport red, **04** sport royal,
08 black, **09** navy, **21** anthracite



4404 - SHORTS PALERMO 2.0

Polyester interlock, 100 % polyester

Without inner slip | Elastic waistband with drawcord

116, 128, 140, 152, 164

S, M, L, XL, XXL

00 white, **01** sport red, **04** sport royal,
08 black, **09** navy, **21** anthracite



STIRRUPS & GUARDS



NEW
04|2025

3870 - SOCKS DYNAMIC

97 % polyester (recycled), 3 % elastane

Ribbed structure on ankle |
Wide ribbed cuff | With JAKO logo

1 (27-30), 2 (31-34), 3 (35-38),
4 (39-42), 5 (43-46), 6 (47-50)

000 white, **100** red, **207** dark green, **251** mint,
335 yellow, **365** coral, **400** royal, **430** sky blue,
800 black, **825** grey, **900** seablue, **919** night blue



NEW
04|2025

3470 - TUBE SOCKS DYNAMIC

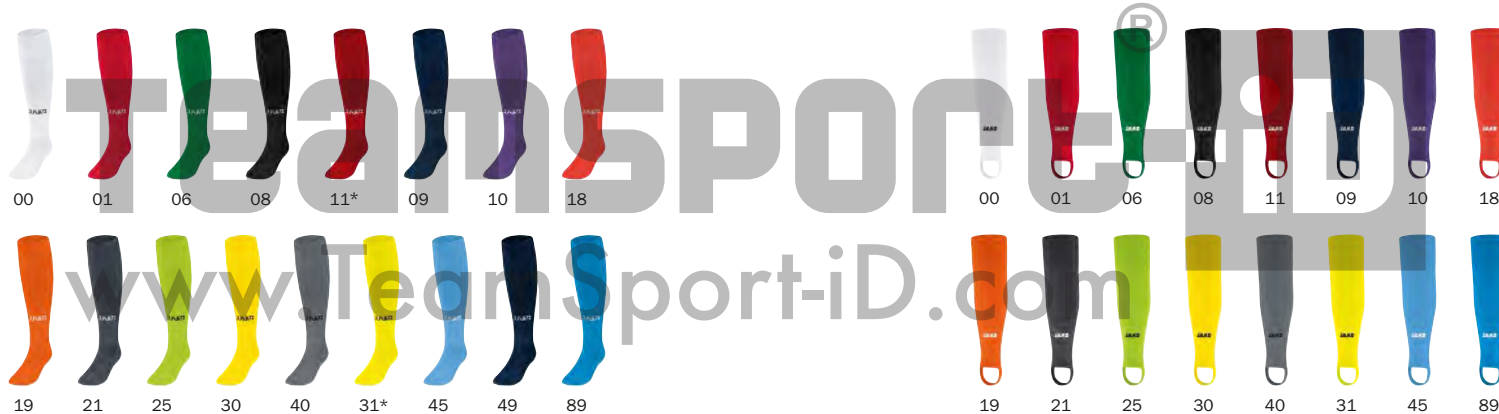
97 % polyester (recycled), 3 % elastane

Ribbed structure on ankle | With JAKO logo

S Bambini (Body height up to 120 cm),
M Junior (Body height up to 160 cm),
L Senior (Body height over 160 cm)

000 white, **100** red, **207** dark green, **251** mint,
335 yellow, **365** coral, **400** royal, **430** sky blue,
800 black, **825** grey, **900** seablue, **919** night blue





3814 - SOCKS GLASGOW 2.0

67 % polyester, 31 % cotton, 2 % elastane

Mesh insert on calf | Ribbed structure on ankle |
Wide ribbed cuff | Cotton foot | With JAKO logo

1 (27-30), 2 (31-34), 3 (35-38),
4 (39-42), 5 (43-46), 6 (47-50)

00 white, **01** sport red, **04** sport royal, **06** sport green, **08** black,
09 navy, **10** purple, **11** chili red*, **18** flame, **19** neon orange,
21 anthracite, **25** neon green, **30** citro, **31** neon yellow*, **40** stone grey,
45 sky blue, **49** seablu, **89** JAKO blue | *While stocks last

3414 - STIRRUPS GLASGOW 2.0

98 % polyester, 2 % elastane

Wide ribbed cuff | Ribbed structure
on ankle | Strap | With JAKO logo

0 Bambini (Body height up to 120 cm),
1 Junior (Body height up to 160 cm),
2 Senior (Body height over 160 cm)

00 white, **01** sport red, **04** sport royal, **06** sport green,
08 black, **09** navy, **10** purple, **11** chili red, **18** flame,
19 neon orange, **21** anthracite, **25** neon green, **30** citro,
31 neon yellow, **40** stone grey, **45** sky blue, **89** JAKO blue



3899 - SOCKS ALLROUND

72 % polyester (recycled), 20 % cotton (organic), 6 % elastane, 2 % polyamide

Ribbed structure on ankle | Elastic compression waistband | Cotton heel and toe area for more comfort | With JAKO logo | JAKO dots on calf

1 (27-30), 2 (31-34), 3 (35-38), 4 (39-42), 5 (43-46), 6 (47-50)

000 white, **110** sport red, **200** sport green, **300** citro, **350** neon orange, **410** sport royal, **430** sky blue, **440** JAKO blue, **800** black, **830** anthracite, **840** stone grey, **930** navy

3401 - TUBE SOCKS

98 % polyester, 2 % elastane

Mesh insert on calf | Ribbed structure on ankle | With JAKO logo

M (Junior), L (Senior)

00 white, **01** sport red, **03** citro, **04** sport royal, **06** sport green, **08** black, **09** navy, **210** neon green, **350** neon orange, **440** JAKO blue, **840** stone grey



TeamSport-iD[®]
www.TeamSport-iD.com

3813 - SOCKS UNI 2.0

67 % polyester, 31 % cotton, 2 % elastane
Mesh insert on calf | Ribbed structure on ankle |
Wide ribbed cuff | Cotton foot | Without JAKO logo

1 (27-30), 2 (31-34), 3 (35-38),
4 (39-42), 5 (43-46), 6 (47-50)

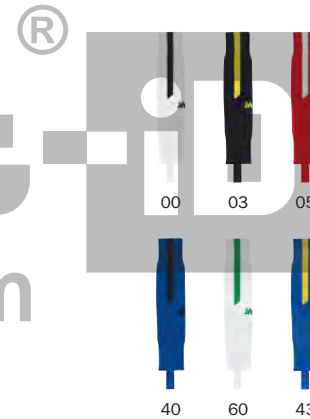
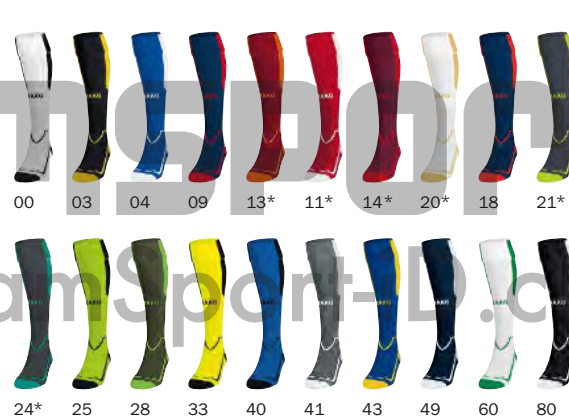
00 white, **01** sport red, **04** sport royal, **08** black

3415 - STIRRUPS UNI

98 % polyester, 2 % elastane
Wide ribbed cuff | Ribbed structure
on ankle | Strap | Without JAKO logo

S Bambini (Body height up to 120 cm),
M Junior (Body height up to 160 cm),
L Senior (Body height over 160 cm)

00 white, **01** sport red, **04** sport royal, **08** black



3866 - SOCKS LAZIO

97 % polyester, 3 % elastane

Extra wide ribbed cuffs with reinforcement |
Ribbed structure on ankle | Padded heel and toe area |
Foot made of functional polyester | JAKO mesh dots on calf

2 (31-34), 3 (35-38), 4 (39-42), 5 (43-46)

00 white/black, **03** black/citro, **04** sport royal/white, **05** sport red/white,
09 navy/sport red, **11** chili red/white*, **13** wine red/neon orange*,
14 dark maroon/sport red*, **18** navy/flame, **20** white/gold*,
21 anthracite/lime*, **24** anthracite/turquoise*, **25** neon green/black,
28 khaki/neon green, **33** neon yellow/black, **40** sport royal/black,
41 stone grey/white, **43** sport royal/citro, **49** seablue/white,
60 white/sport green, **80** black/white | *While stocks last

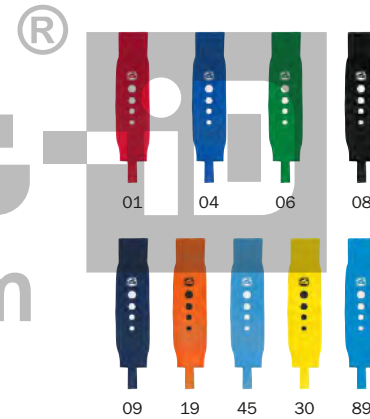
3466 - STIRRUPS LAZIO

97 % polyester, 3 % elastane

Extra wide ribbed cuff with reinforcement |
Ribbed structure on ankle | Strap |
JAKO mesh dots on calf

1 Junior (Body height up to 160 cm),
2 Senior (Body height over 160 cm)

00 white/black, **03** black/citro, **04** sport royal/white,
05 sport red/white, **40** sport royal/black,
43 sport royal/citro, **60** white/sport green



3808 - SOCKS ROMA

79 % polyester, 18 % cotton, 3 % elastane
 Wide ribbed cuff | Ribbed structure on ankle |
 Cotton padded footbed | JAKO dots on calf

3 (35-38), 4 (39-42), 5 (43-46)

00 white, **01** sport red, **04** sport royal, **06** sport green, **08** black,
09 navy, **14** maroon/seablue, **19** neon orange, **30** citro,
45 sky blue, **49** royal/seablue, **68** sport green/black,
81 red/black, **83** JAKO blue/neon yellow, **89** JAKO blue

3408 - STIRRUPS ROMA

97 % polyester, 3 % elastane
 Wide ribbed cuff | Ribbed structure on ankle |
 Strap | JAKO dots on calf

1 Junior (Body height up to 160 cm),
 2 Senior (Body height over 160 cm)

00 white, **01** sport red, **04** sport royal, **06** sport green,
08 black, **09** navy, **19** neon orange, **30** citro, **45** sky blue,
89 JAKO blue



434

800



434



800

NEW
04|2025

2775 - SHIN GUARD RIVER BASIC

Light hard shell with velcro fastener for fixation | Elastic sock for fixation

- XS (Body height up to 120 cm),
- S (Body height 120-140 cm),
- M (Body height 140-160 cm),
- L (Body height over 160 cm)

434 sky blue/navy/coral, **459** light blue/blue/JAKO blue, **800** black

NEW
04|2025

2774 - SHIN GUARD RIVER CLASSIC

Light hard shell with fixed ankle protection and velcro fastener for further fixation

- XS (Body height up to 120 cm),
- S (Body height 120-140 cm),
- M (Body height 140-160 cm),
- L (Body height over 160 cm)

434 sky blue/navy/coral, **459** light blue/blue/JAKO blue, **800** black

TEAMSPORT-
www.TeamSport-
®



TeamSport-ID[®]
www.TeamSport-ID.com

NEW
04|2025

2776 - SHIN GUARD RIVER LIGHT

Light shin guard for insertion | Elastic sock for fixation | Ergonomically shaped hard shell with EVA foam for ideal wearing comfort

- XS (Body height up to 120 cm),
- S (Body height 120-140 cm),
- M (Body height 140-160 cm),
- L (Body height over 160 cm)

434 sky blue/navy/coral, **459** light blue/sky blue/blue, **800** black

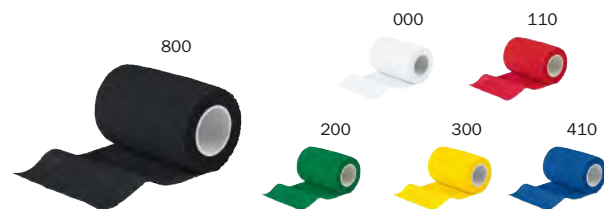
NEW
04|2025

2715 - SPARE SOCKS 2.0

91 % polyester, 9 % elastane
Sock made from elastic polyester elastane for fixation

- XS, S, M, L

800 black



2925 - SOCKS TAPE

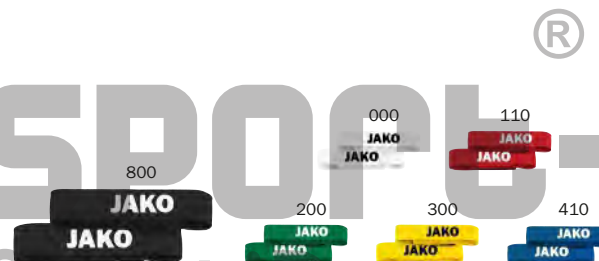
96 % polypropylene, 4 % elastane
Flexible plastic band for fixation of shinguards, socks and stirrups | No adhesive residues

7.5 x 200 cm

000 white, **110** sport red, **200** sport green, **300** citro, **410** sport royal, **800** black



800



2923 - SOCKS BAND

70 % polyester, 30 % elastane
With velcro for fixation

Width 2.5 cm 1 pair

000 white, **110** sport red, **200** sport green, **300** citro, **410** sport royal, **800** black

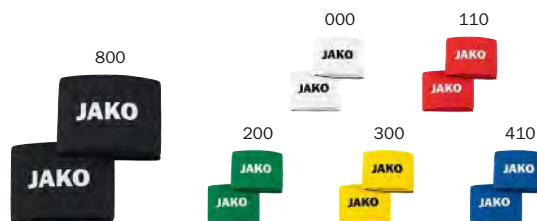
NEW
02|2025

2778 - MINI SHIN GUARD PRO

Flexible shin guard for insertion | Optimal fit, save grip | Made from recyclable TPE plastic | Made in Germany | 8 x 0.5 x 12 cm (LxWxH) | Weight: 45g | Suitable for adults and children

XXS

800 black



2924 - SHIN GUARD BAND

70 % polyester, 30 % elastane
With velcro for fixation

Width 6.5 cm 1 pair

000 white, **110** sport red, **200** sport green, **300** citro, **410** sport royal, **800** black



TEAMSPORTID

www.TeamSportid.com

GOALKEEPER & REFEREE



NEW
04|2025

8946 - GK JERSEY RIVER
Polyester interlock, 100 % polyester (recycled)

Ribbed collar | Until end of 2028

S, M, L, XL, XXL, 3XL

8946K - CHILDREN SIZES
Padded elbows

116, 128, 140, 152, 164

251 mint, **365** coral, **430** sky blue, **800** black

8923 - GK JERSEY POWER
Polyester interlock, 100 % polyester (recycled)

Contrast insert on shoulder and sleeve |
Padded elbows | Until end of 2026

116, 128, 140, 152, 164
S, M, L, XL, XXL

100 red, **210** neon green, **300** citro, **375** flame/seablue,
433 sky blue/seablue, **800** black, **840** stone grey

SHORTS & SOCKS

Shorts:
4423 - Shorts POWER | p. 175
4400 - Shorts MANCHESTER 2.0 | p. 176

Socks:
3808 - Socks ROMA | p. 184
3814 - Socks GLASGOW 2.0 | p. 180
3414 - Stirrups GLASGOW 2.0 | p. 180



08



8935 - GK TROUSERS PROFİ

Polyester piqué, 100 % polyester

Abrasion-proof and padded kevlar inserts in
knee and hip area | Ribbed insert on calf |

Elastic waistband with drawcord

128, 140, 152, 164

S, M, L, XL, XXL

08 black



8936 - GK TROUSERS

Polyester piqué, 100 % polyester

Ergonomic, padded inserts in knee and hip area | Ribbed insert on calf | Elastic waistband with drawcord

116, 128, 140, 152, 164
S, M, L, XL, XXL, 3XL

08 black



8938 - GK CAPRI

Polyester piqué, 100 % polyester

Ergonomic, padded inserts in knee and hip area | Elastic waistband with drawcord

128, 140, 152, 164
S, M, L, XL, XXL, 3XL

08 black



8939 - GK SHORTS

Polyester piqué, 100 % polyester

Ergonomic, padded inserts in hip area | Elastic waistband with drawcord

128, 140, 152, 164
S, M, L, XL, XXL, 3XL

08 black



08



Back view

08



Back view



8965 - GK UNDERWEAR L/S

Polyester stretch tech, 87 % polyester, 13 % elastane

Elastic material with slightly compressive effect |
Bodyfit | Flexible elbow padding

XS, S, M, L, XL, XXL

08 black



8986 - GK UNDERWEAR TIGHT

Polyester stretch tech, 83 % polyester, 17 % elastane

Comfort waistband | Elastic material with
slightly compressive effect | Bodyfit |
Flexible hip and thigh padding

XS, S, M, L, XL, XXL

08 black



436

NEW
02|2025

2581 - GK GLOVE RIVER WRC PROTECTION

German quality adhesive foam | V-finger protection,
removable protectors on all fingers | Regular cut |
Elastic strap ideally fixes glove | Breathable inserts

7, 7.5, 8, 8.5, 9, 9.5,
10, 10.5, 11, 11.5, 12

436 sky blue/coral/navy

933



933



933



NEW
02|2025

**2582 - GK GLOVE
RIVER GIGA NC**

German quality adhesive foam | Negative Cut |
Breathable neopren for maximum ventilation |
Elastic strap ideally fixes glove

7, 7.5, 8, 8.5, 9, 9.5,
10, 10.5, 11, 11.5, 12

933 navy/sky blue/coral

NEW
02|2025

**2585 - GK GLOVE
RIVER BASIC RC PROTECTION**

German quality adhesive foam | V-finger
protection | Regular Cut | 360° closure
system | Breathable inserts

4, 5, 6, 7, 8, 9, 10, 11, 12

933 navy/sky blue/coral

NEW
02|2025

**2589 - GK GLOVE
RIVER BASIC RC**

German quality adhesive foam | Regular Cut |
360° closure system | Breathable inserts

4, 5, 6, 7, 8, 9, 10, 11, 12

933 navy/sky blue/coral



NEW
02|2025

**2583 - GK GLOVE
RIVER SUPERSOFT RC**

German quality adhesive foam | Regular Cut |
360° closure system | Breathable inserts

7, 7.5, 8, 8.5, 9, 9.5,
10, 10.5, 11, 11.5, 12

436 sky blue/coral/navy

NEW
02|2025

**2584 - GK GLOVE
RIVER SUPERSOFT NC**

German quality adhesive foam | Negative Cut |
360° closure system | Breathable inserts

7, 7.5, 8, 8.5, 9, 9.5,
10, 10.5, 11, 11.5, 12

436 sky blue/coral/navy

NEW
02|2025

**2580 - GK GLOVE
RIVER BASIC JUNIOR RC**

Regular Cut | Side access with circumferential
strap | Breathable inserts

3, 4, 5, 6, 7, 8

192 coral/sky blue/navy



08



89



Back view



4271 - REFEREE JERSEY S/S

Polyester interlock, 100 % polyester

Attached chest pocket with velcro closure | Ribbed collar with press button placket | Back made of micro mesh

XS, S, M, L, XL, XXL, 3XL

03 lemon, 08 black, 89 JAKO blue



03



08

89

Back view



08



Back view



08



89



4371 - REFEREE JERSEY L/S

Polyester interlock, 100 % polyester
Attached chest pocket with velcro closure |
Ribbed collar with press button placket |
Ribbed cuffs | Back made of micro mesh

XS, S, M, L, XL, XXL, 3XL

03 lemon, 08 black, 89 JAKO blue



4471 - REFEREE SHORTS

Polyester interlock, 100 % polyester
Without inner slip | Attached back
pocket with velcro closure | Side pockets |
Elastic waistband with drawcord

XS, S, M, L, XL, XXL, 3XL

08 black



3814 - SOCKS GLASGOW 2.0

67 % polyester, 31 % cotton, 2 % elastane
Mesh insert on calf | Ribbed structure
on ankle | Wide ribbed cuff | Cotton foot |
With JAKO logo

1 (27-30), 2 (31-34), 3 (35-38),
4 (39-42), 5 (43-46), 6 (47-50)

08 black, 89 JAKO blue | additional colours on p. 180



UNDERWEAR



NEW 04/2025 **6479 - LONGSLEEVE FUNCTION**

Polyester stretch jersey
 91 % polyester (recycled), 9 % elastane
 Bodyfit
 S, M, L, XL, XXL
000 white, **100** red, **400** royal, **623** yellow,
632 green, **800** black, **825** grey, **900** seablue



NEW 04/2025 **8479 - LONG TIGHT FUNCTION**

Polyester stretch jersey
 91 % polyester (recycled), 9 % elastane
 Bodyfit | Comfort cuff
 116, 128, 140, 152, 164
 S, M, L, XL, XXL
000 white, **100** red, **400** royal, **623** yellow,
632 green, **800** black, **825** grey, **900** seablue





400



Back view



000

100

207

623

800

825

900

NEW
03/2025

6459 - LONGSLEEVE LIGHTWEIGHT

96 % polyamide (80 % recycled), 4 % elastane

Seamless | Bodyfit | Soft grip | Lightweight



3XS, XXS, XS

S, M, L, XL



000 white, **100** red, **207** dark green, **400** royal,
623 yellow, **800** black, **825** grey, **900** seablue



NEW
04|2025

8579 - SHORT TIGHT FUNCTION

Polyester stretch jersey
91 % polyester (recycled), 9 % elastane
Elastic waistband



116, 128, 140, 152, 164
S, M, L, XL, XXL



000 white, 100 red, 400 royal, 623 yellow,
632 green, 800 black, 825 grey, 900 seablue

NEW
03|2025

8559 - SHORT TIGHT SEAMLESS

93 % polyamide, 7 % elastane
Seamless | Bodyfit | Soft grip | Lightweight



XS, S, M, L, XL, XXL

000 white, 100 red, 207 dark green,
400 royal, 800 black, 900 seablue



000 110 200 410 930



00 01 04 06 09 13 10 18 25 30 40 89



6456 - LONGSLEEVE COMFORT RECYCLED

100 % polyamide (recycled)
Seamless | Bodyfit | Soft touch



3XS, XXS, XS
S, M, L, XL, XXL

000 white, **110** sport red, **200** sport green,
410 sport royal, **800** black, **930** navy



6455 - LONGSLEEVE COMFORT 2.0

100 % polyamide
Seamless | Bodyfit | Soft touch

3XS, XXS, XS
S, M, L, XL, XXL

00 white, **01** sport red, **04** sport royal, **06** sport green,
08 black, **09** navy, **10** purple, **13** wine red, **18** flame,
25 neon green, **30** citro, **40** stone grey, **89** JAKO blue



Back view



00 01 04 06 09



6955 - TURTLENECK COMFORT 2.0

100 % polyamide
Seamless | Bodyfit | Soft touch

3XS, XXS, XS
S, M, L, XL, XXL

00 white, **01** sport red, **04** sport royal,
06 sport green, **08** black, **09** navy



Back view



00 01 04 06 09



6555 - LONG TIGHT COMFORT 2.0

93 % polyamide, 7 % elastane
Seamless | Bodyfit | Soft touch

3XS, XXS, XS
S, M, L, XL, XXL

00 white, **01** sport red, **04** sport royal,
06 sport green, **08** black, **09** navy



08



08



TEAMSPORT-ID
TeamSport-ID.com

00



Back view

00



Back view



6155 - T-SHIRT COMFORT 2.0

100 % polyamide
Seamless | Bodyfit | Soft touch

S, M, L, XL, XXL

00 white, 08 black



6055 - TANK TOP COMFORT 2.0

100 % polyamide
Seamless | Bodyfit | Soft touch

S, M, L, XL, XXL

00 white, 08 black



08

JAKO



08

JAKO



08

JAKO

TeamSport-ID[®]
www.TeamSport-ID.com



00



00

01

04

06

09

30

45



00

01

03

04

06

09

40



8555 - SHORT TIGHT COMFORT 2.0

93 % polyamide, 7 % elastane
Seamless | Bodyfit | Soft touch

S, M, L, XL, XXL

00 white, 08 black



8516 - TIGHT BASIC 2.0

Polyester stretch jersey, 88 % polyester, 12 % elastane
Elastic waistband

116, 128, 140, 152, 164

S, M, L, XL, XXL

00 white, 01 sport red, 04 sport royal, 06 sport green,
08 black, 09 navy, 30 citro, 45 sky blue



8551 - SHORT TIGHT COMPRESSION 2.0

Polyester stretch tech, 87 % polyester, 13 % elastane
Mesh inserts: 88 % polyester, 12 % elastane
Comfort waistband in modern melange look |
Elastic material with slightly compressive effect |
Bodyfit | Mesh inserts | Flatlock seams

140, 152, 164

S, M, L, XL, XXL

00 white, 01 sport red, 03 citro, 04 sport royal,
06 sport green, 08 black, 09 navy, 40 stone grey



08



Back view

08



6957 - TURTLENECK WINTER

Polyester stretch brush, 92 % polyester, 8 % elastane

Thermo-insulating functional material offers optimum protection against cold | Slightly roughened fabric on inside for soft touch | Light compressive effect | Bodyfit | Flatlock seams | While stocks last

S, M, L, XL, XXL

08 black



8457 - LONG TIGHT WINTER

Polyester stretch brush, 92 % polyester, 8 % elastane

Thermo-insulating functional material offers optimum protection against cold | Slightly roughened fabric on inside for soft touch | Comfort waistband | Light compressive effect | Bodyfit | Flatlock seams | While stocks last

S, M, L, XL, XXL

08 black



08



08



08

TeamSport®-id

www.TeamSport-id.com



40



21



40



21



40



8561 - BOXER SHORTS FUNCTION

Polyester stretch tech, 92 % polyester, 8 % elastane
Quick-drying fabric for pleasant wearing comfort | Comfort waistband | Flatlock seams | While stocks last

S, M, L, XL, XXL

08 black, **40** grey melange



6204 - BOXER SHORTS BASIC 2 PACK

Single stretch jersey, 95 % cotton, 5 % elastane
Col. 40: 50 % cotton, 45 % polyester, 5 % elastane
Quick-drying fabric for pleasant wearing comfort | Comfort waistband | Flatlock seams | While stocks last

S, M, L, XL, XXL

08 black, **21** anthracite, **40** grey melange



6205 - BOXER SHORTS PREMIUM 2 PACK

Single stretch jersey, 90 % cotton, 10 % elastane
Col. 40: 50 % cotton, 45 % polyester, 5 % elastane
Quick-drying fabric for pleasant wearing comfort | Comfort waistband | Flatlock seams | With stamped JAKO logo | While stocks last

S, M, L, XL, XXL

08 black, **21** anthracite, **40** grey melange



JAKO

TOP
www.r...

JACKETS



Back view



Back view

NEW
09|2025

7408 - JACKET FUNCTION

100 % polyester, 3000 mm TPU



Wind and water-repellent outer material with membrane | Mesh lining with open finish in back | Ventilation opening on the back | Adjustable hem | Adjustable hood | Side pockets with zip | Inner pocket with velcro

S, M, L, XL, XXL, 3XL, 4XL

800 black

NEW
09|2025

7308 - ZIP TOP FUNCTION

100 % polyester, 3000 mm lamination



Wind and water-repellent material with lamination | Adjustable hem | Adjustable hood | Side pockets with zip

S, M, L, XL, XXL, 3XL, 4XL

800 black



7423 - RAIN JACKET POWER

100 % polyester, 3000 mm lamination/3000 g/m²/24h

Contrast insert on shoulder and sleeve | Wind and water repellent outer material with lamination | Waistband with drawcord and stoppers | Elastic cuffs | Integrated hood in collar | Side pockets with zip

128, 140, 152, 164

S, M, L, XL, XXL, 3XL

100 red, **200** sport green, **400** royal,
800 black, **840** stone grey, **900** seablue



7402 - RAIN JACKET TEAM 2.0

100 % polyester, 1500 mm PU

Lining: 100 % polyester

Water-repellent outer material with PU-coating |
 Extended back | Mesh lining with open finish in back |
 Cuffs with elastic insert | Side pockets with zip

116, 128, 140, 152, 164

S, M, L, XL, XXL, 3XL, 4XL

100 red, **200** sport green, **400** royal,
800 black, **840** stone grey, **900** seablue



7302 - RAIN ZIP TEAM

100 % polyester, 1500 mm PU

Water-repellent outer material with PU-coating |
Cuffs with elastic binding

116, 128, 140, 152, 164

S, M, L, XL, XXL, 3XL, 4XL

100 red, **200** sport green, **400** royal,
800 black, **840** stone grey, **900** seablue



7502 - RAIN TROUSERS TEAM 2.0

100 % polyester, 1500 mm PU

Water-repellent outer material with PU-coating |
Side pockets with zip | Elastic hem with zip |
Elastic waistband with drawcord

116, 128, 140, 152, 164

S, M, L, XL, XXL, 3XL

800 black



800



Back view



100

400

440

900



7403 - RAIN JACKET ALLROUND

100 % polyester, 5000 mm lamination, 5000 g/m²/24h

Lining: 100 % polyester

Water-repellent outer material with lamination |
Taped main seams | Soft fleece on inside of collar |
Mesh lining | Cuffs with velcro | Side pockets with zip

S, M, L, XL, XXL, 3XL, 4XL

100 red, 400 royal, 440 JAKO blue,
800 black, 900 seablue



840

900

Back view



840

900

Back view



7607 - SOFTSHELL JACKET PREMIUM

100 % polyester, 5000 mm TPU membrane, 5000 g/m²/24h

Water and wind-repellent outer material | Soft fleece on inner side | Extended back | Hood with drawcord and stoppers | Side pockets with zip | Chest pocket with zip | Inner pocket with zip

128, 140, 152, 164

S, M, L, XL, XXL, 3XL, 4XL, 5XL

34, 36, 38, 40, 42, 44, 46

800 black, 840 stone grey, 900 seablue



7007 - SOFTSHELL VEST PREMIUM

100 % polyester, 5000 mm TPU membrane, 5000 g/m²/24h

Water and wind-repellent outer material | Soft fleece on inner side | Extended back | Side pockets with zip | Chest pocket with zip | Inner pocket with zip

S, M, L, XL, XXL, 3XL, 4XL, 5XL

34, 36, 38, 40, 42, 44, 46

800 black, 840 stone grey, 900 seablue



08 Back view



04 11 22 99



7605 - SOFTSHELL JACKET LIGHT

Outer material: 100 % polyester, 5000 mm PU, 5000 g/m²/24h

Water and wind-repellent outer material | Hem with elastic binding | Hood with drawcord and stoppers | Side pockets with zip | Chest pocket with zip

S, M, L, XL, XXL, 3XL
34, 36, 38, 40, 42, 44

08 black, **40** grey melange



7604 - SOFTSHELL JACKET TEAM

Outer material: 92 % polyester, 8 % elastane, 12000 mm PU, 6000 g/m²/24h

Water and wind-repellent outer material | Soft fleece on inside | Side pockets with zip

128, 140, 152, 164
S, M, L, XL, XXL, 3XL, 4XL
34, 36, 38, 40, 42, 44

04 royal, **08** black, **11** chili red, **22** soft green, **99** seablue



40



99



Back view



40



99



Back view

7004 - HYBRID JACKET PREMIUM

Outer material: 100 % nylon

Padding: 100 % polyester

Sleeves and side inserts: 90 % polyester, 10 % elastane

Heat insulating padding on chest and back | Sleeves and sides with highly elastic functional material | Hem and cuffs with elastic binding | Side pockets with zip

S, M, L, XL, XXL, 3XL

34, 36, 38, 40, 42, 44

08 black, **40** stone grey, **99** sea blue

7005 - QUILTED VEST PREMIUM

Outer material: 100 % nylon

Padding: 100 % polyester

Side inserts: 90 % polyester, 10 % elastane

Heat insulating padding on chest and back | Sides with highly elastic functional material | Armhole and hem with elastic binding | Side pockets with zip

S, M, L, XL, XXL, 3XL

34, 36, 38, 40, 42, 44

08 black, **40** stone grey, **99** sea blue



08

Back view



103

262

402

801

831

7204 - QUILTED JACKET

Outer material: 100 % nylon

Padding: 100 % polyester

Lining: 100 % nylon

Ultralight | Heat insulating padding |
Hem and cuffs with elastic binding |
Padded hood | Side pockets with zip |
Bag for stowing | Low packaging volume

128, 140, 152, 164
S, M, L, XL, XXL, 3XL, 4XL
34, 36, 38, 40, 42, 44

08 black, **99** seablue

7703 - FLEECE JACKET

Micro fleece, 100 % polyester

Side pockets with zip

128, 140, 152, 164
S, M, L, XL, XXL, 3XL, 4XL, 5XL
34, 36, 38, 40, 42, 44, 46, 48

103 red/wine red, **262** green/sport green,
402 royal/seablue, **801** black/anthracite,
831 anthracite/black, **906** seablue/dark blue



800



522



919



Back view

NEW 7207 - JACKET PUFFY

09/2025

100 % nylon

Heat-insulating, light padding | Cuff with elastic binding | Adjustable hem | Side pockets

S, M, L, XL, XXL, 3XL, 4XL

522 light grey, 800 black, 919 night blue



800



241



Back view

NEW
09/2025

7808 - BOMBER JACKET

100 % polyester, 3000 mm lamination



Wind and water-repellent material with lamination |
Heat-insulating, light padding | Quilted inner lining |
Knitted ribbed cuffs and hem | Side pockets with zip |
Inner velcro pocket

S, M, L, XL, XXL, 3XL, 4XL

241 olive green, **800** black



200 400 800 840 900



200 400 800 840 900



7103 - COACH JACKET TEAM WITH HOOD

Polyester ribstop, 100 % polyester, 1500 mm lamination

Padding: 100 % polyester

Lining: 100 % polyester

Wind and water-repellent outer material with lamination | Heat insulating padding | Soft fleece on inside | Integrated ribbed cuffs in sleeve | Hood with drawcord and stoppers | Without cords for children sizes | Side pockets with zip

128, 140, 152, 164
S, M, L, XL, XXL, 3XL, 4XL

100 red, **200** sport green, **400** royal,
800 black, **840** stone grey, **900** seablue



7104 - COACH JACKET TEAM

Polyester ribstop, 100 % polyester, 1500 mm lamination

Padding: 100 % polyester

Lining: 100 % polyester

Wind and water-repellent outer material with lamination | Heat insulating padding | Soft fleece on inside | Integrated ribbed cuffs in sleeve | Side pockets with zip

128, 140, 152, 164
S, M, L, XL, XXL, 3XL, 4XL

100 red, **200** sport green, **400** royal,
800 black, **840** stone grey, **900** seablue



100 260 400 825 900

NEW
09|2025

7210 - STADIUM JACKET

100 % polyester, 3000 mm lamination



Wind and water repellent outer material with lamination | Heat-insulating light padding | Adjustable Hood | Side pockets with zip | Customization area on the back

128, 140, 152, 164
S, M, L, XL, XXL, 3XL, 4XL

100 red, **260** green, **400** royal, **800** black, **825** grey, **900** seablue



SPORT-ID
Sport-ID

08



7105 - BENCH COAT TEAM

Outer material: 100 % polyester, 1500 mm PU

Padding: 100 % polyester

Sleeve & lining: 100 % polyester

Water-repellent outer material with PU-coating |
Heat insulating padding | Cuff with elastic binding |
Two-way zip | Side pockets | Quilting seams
on inside of chest and back area and on outside
of sleeves | Padded hood with lining | Side pockets

S, M, L, XL, XXL

08 black



800



08



Back view



09



Back view

NEW 7208 - WINTER JACKET FUNCTION

09 | 2025

100 % polyester, 5000 mm TPU



Wind and water-repellent outer material with membrane | Heat-insulating padding | Quilted inner lining | Sleeve ends with elastic cuffs | Adjustable hem | Removeable hood | Hood with drawcord and stoppers | Side pockets with zip | Inner pocket with velcro

S, M, L, XL, XXL, 3XL, 4XL

800 black



EX7250 - QUILTED JACKET BASIC

Polyester tafetta, 100 % polyester

Padding: 100 % polyester

Lining: 100 % polyester

Ultralight | Heat insulating padding | Quilting seams | Hood, jacket and sleeve ends with elastic binding | Side pockets with zip | Low packing volume

116, 128, 140, 152, 164

S, M, L, XL, XXL, 3XL

08 black, 09 seablue

TeamSport-ID
TeamSport-ID.com

BALLS

CERTIFICATES



The training ball WORLD (p. 230) is produced under FAIRTRADE conditions. Here, additional focus is placed on the payment of a bonus to the producer organizations. The payment of a bonus enables the employees to invest in joint projects that improve the living and working conditions of local people.



The "FIFA Quality Pro" certificate promises maximum performance, accuracy and safety. This quality seal guarantees optimum performance at the highest level.



Articles certified with the "FIFA Basic" certificate fulfill the fundamental criteria of performance, precision, safety and durability.

SURFACE/GRIP

The high quality, structured PU material of the ball offers optimum grip and leads to precise flight characteristics. In addition, the profiled surface improves aerodynamics and gives the ball a stable trajectory.

SEAMS

Hand-stitched balls: The precise seams lead to a perfect form stability and maintain optimal ball pressure. The high-quality workmanship gives the ball a long life span and makes it particularly robust.

Machine-stitched balls: The increased number of stitching points ensures a particularly strong connection between the panels, which makes the ball extremely hard-wearing. The special construction also gives it the high-quality appearance of a hand-stitched ball.

Bonding technology: The seamless workmanship makes the ball particularly round and enables higher speed in games. The special glue reduces the water absorption, which significantly increases the life span and keeps the ball dimensionally stable even in wet conditions.

Hybrid balls: By combining stitching and gluing, hybrid balls combine the advantages of both technologies, giving them exceptional durability, stability and optimum playability.



LAYERS

The individual combination of various layers of foam lead to a soft, precise ball feeling and at the same time guarantees constant ball properties, even at low temperatures.

BLADDER

Butyl bladder: The high density of the butyl bladder minimizes air loss, allowing the ball to keep its shape for a long time. If the bladder is also wrapped, it ensures perfect roundness and relieves the material which increases durability.

Rubber bladder: The rubber bladder offers significantly better air retention than the latex bladder. If the rubber bladder is also wrapped, it ensures perfect roundness of the ball. This helps to relieve the material and therefore contributes to a longer durability and higher playing quality.



662

PARTICULARLY
SUITABLE FOR
ARTIFICIAL
GRASS



665



656

NEW

2347 - MATCH BALL GLORY

FIFA QUALITY PRO-licenced, official match ball | Bonding technology | 14 panel | Wrapped butyl bladder | Particularly suitable for artificial grass thanks to its resistant surface with polyurethane layer



5

662 white/rubine red/cool grey

NEW

2376 - MATCH BALL FLOW

FIFA QUALITY PRO-licenced, official match ball | Hybrid technology | 12 panel | Wrapped butyl bladder



5

665 white/navy/orange

NEW

2371 - MATCH BALL ICONIC

FIFA QUALITY PRO-licenced, official match ball | Hybrid technology | 32 panel | Wrapped butyl bladder



5

656 white/navy/neon yellow



666

NEW 2377 - TRAINING BALL FLOW



FIFA BASIC-certified training ball |
Hybrid technology | 12 panel |
Wrapped butyl bladder

4, 5

666 white/fluo rede/navy



663

PARTICULARLY
SUITABLE FOR
ARTIFICIAL
GRASS

NEW 2348 - TRAINING BALL GLORY



FIFA BASIC-certified training ball | Bonding
technology | 14 panel | Wrapped rubber bladder |
Particularly suitable for artificial grass thanks
to its resistant surface with polyurethane layer

4, 5

663 white/rose/cool grey

SPORT-ID
www.leanSport-ID.com



NEW 2342 - TRAINING BALL RIVER

FIFA BASIC certified training ball
(sizes 4 and 5) | Machine-stitched and bonded | 32 panel | Rubber bladder

3, 4, 5

659 white/navy, 666 white/green, 667 white/yellow

NEW 2355 - TRAINING BALL CONTRAST

FIFA BASIC certified training ball
(sizes 4 and 5) | Hand-stitched | 32 panel | Butyl bladder



3, 4, 5

658 white/black, 668 white/coral, 669 white/mint

TEAMSPOORT-ID



NEW 2372 - TRAINING BALL ICONIC

FIFA BASIC-certified training ball | Hybrid technology | 32 panel | Wrapped rubber bladder



4, 5

657 white/navy/coral



2335 - TRAINING BALL WORLD

FAIRTRADE certified training ball | Hybrid technology | 12 panel | Wrapped butyl bladder | Panel with star print

5

649 white/neon green/seablue,
651 white/pink/black

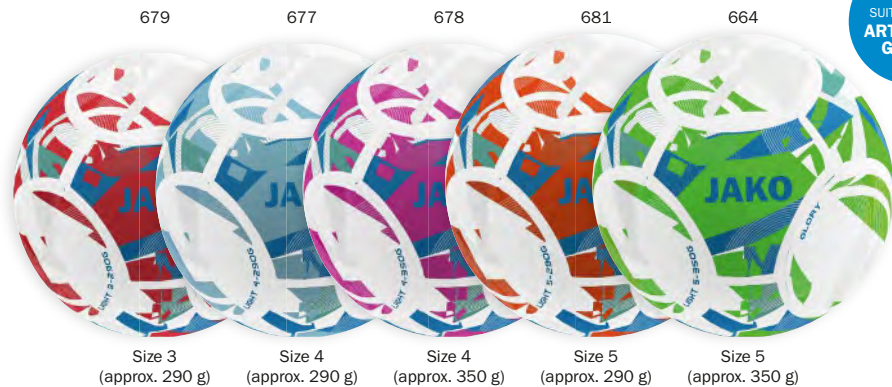


2313 - TRAINING BALL ANIMAL

FIFA BASIC-certified training ball | Hybrid technology | 32 panel | Wrapped rubber bladder | Panel with animal print

4, 5

701 white/black/stone grey,
797 white/pink/black*
| *While stocks last



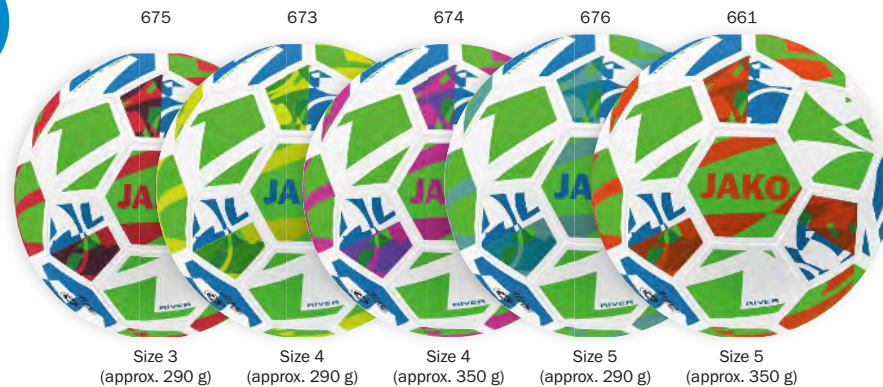
679 Size 3 (approx. 290 g) 677 Size 4 (approx. 290 g) 678 Size 4 (approx. 350 g) 681 Size 5 (approx. 290 g) 664 Size 5 (approx. 350 g)

NEW 2349 - LIGHT BALL GLORY

Bonding technology | 14 panel | Wrapped rubber bladder | Particularly suitable for artificial grass thanks to its resistant surface with polyurethane layer

3, 4, 5

664 white/neon green/JAKO blue, 677 white/light blue/JAKO blue, 678 white/pink/JAKO blue, 679 white/red/JAKO blue, 681 white/neon orange/JAKO blue



675 Size 3 (approx. 290 g) 673 Size 4 (approx. 290 g) 674 Size 4 (approx. 350 g) 676 Size 5 (approx. 290 g) 661 Size 5 (approx. 350 g)

NEW 2343 - LIGHT BALL RIVER

Machine-stitched | 32 panel | Wrapped rubber bladder

® 3, 4, 5

661 white/neon green/neon orange, 673 white/neon green/neon yellow, 674 white/neon green/pink, 675 white/neon green/red, 676 white/neon green/mint

TEAMSPOORT
www.Teamsport-ID.com



671 Size 3 (approx. 290 g) 669 Size 4 (approx. 290 g) 684 Size 4 (approx. 350 g) 670 Size 4 (approx. 350 g) 683 Size 4 (approx. 350 g) 672 Size 5 (approx. 290 g) 660 Size 5 (approx. 350 g) 682 Size 5 (approx. 350 g)

NEW 2373 - LIGHT BALL ICONIC

Hybrid technology | 32 panel | Wrapped rubber bladder

3, 4, 5

660 white/navy/neon green, 669 white/navy/neon orange, 670 white/navy/pink, 671 white/navy/red, 672 white/navy/mint, 682 white/coral/neon green, 683 white/coral/pink, 684 white/coral/light orange



NEW 2339 - MINI BALL ICONIC

Machine-stitched | 16 panel | Rubber bladder

1

668 white/JAKO blue/neon yellow, 685 white/black/red, 689 white/cyan/neon yellow



693



694

NEW
04|2025

2367 - MATCH BALL FUTSAL

FIFA QUALITY PRO-licensed, official match ball | Hybrid technology | 32 panel | Wrapped butyl bladder



4

693 white/navy/sky blue

NEW
04|2025

2368 - TRAINING BALL FUTSAL

Hybrid technology | 32 panel | Wrapped butyl bladder

4

694 white/navy/dusky pink



695

696

Size 4
(approx. 290 g)

Size 4
(approx. 350 g)

NEW
04|2025

2366 - LIGHT BALL FUTSAL

Hybrid technology | 32 panel | Wrapped butyl bladder

4

695 white/navy/neon green, 696 white/navy/red



692

NEW
09|2025

2387 - INDOOR BALL ICONIC

Hand-stitched | Felt upper material | 4-ply lamination for optimal durability | 32 panel | Butyl bladder

4, 5

692 neon yellow/yellow/black



690

NEW
09|2025

2381 - WINTER BALL ICONIC

FIFA BASIC-certified training ball | Hybrid technology | 32 panel | Wrapped rubber bladder

4, 5

690 orange/red/black





08

2396 - BALL PUMP BASIC

Two way pump system

08 1

08 black



800

2383 - BALL NET FOR 1 BALL

For 1 ball | For storage or for transportation | Without content

800 0

800 black



800

2333 - BALL NET FOR 3 BALLS

For 3 balls | Without content

800 0

800 black



800

2346 - BALL NET FOR 10 BALLS

For approx. 10 balls | Without content

800 0

800 black



08

2386 - BALL BAG

For approx. 20 balls | Without content |
Size: 54 cm x 93 cm | With transport handle |
Adjustable shoulder straps

08 0

08 black

TEAMSport-ID[®]
www.TeamSport-ID.com

JAKO FOOTWEAR



INNOVATIVE
TECHNOLOGIE

RS89

Unleash your instinct.

JAKO SERVICE



PURA

Control the game.



Discover now

MADE IN EUROPE

SHOES



TEAMSPORT
www.TeamSport.com

666



667



670



RS89

NEW
07/2025

5550 - RS89 ELITE FG/AG

Made in Europe | Stud shoe for adults | Suitable for natural and artificial grass | Optimum fit thanks to European lasts | Production with modern direct injection technology | Lightweight, technical upper material for more dynamism | Knitted tongue construction with asymmetric lacing

36.5, 37.5, 38, 38.5, 39, 40, 40.5, 41, 42, 42.5, 43, 44, 44.5, 45, 45.5, 46, 47, 47.5, 48, 48.5

666 white/cool grey, **667** white/rhodamine red/blue, **670** black/white



KIDS
FOOTBALL BOOTS



NEW
07/2025

5551 - RS89 TEAM FG/AG

Made in Europe | Stud shoe for adults | Suitable for natural and artificial grass | Optimum fit thanks to European lasts | Production with modern direct injection technology | Lightweight, technical upper material for more dynamism | Knitted tongue construction with asymmetric lacing

39, 40, 40.5, 41, 42, 42.5, 43, 44, 44.5, 45, 45.5, 46, 47, 47.5, 48, 48.5

666 white/cool grey, **667** white/rhodamine red/blue, **670** black/white

NEW
07/2025

5554 - RS89 ACADEMY FG/AG

Made in Europe | Stud shoe for kids | Suitable for natural and artificial grass | Optimum fit thanks to European lasts | Production with modern direct injection technology | Lightweight, technical upper material for more dynamism | Knitted tongue construction with asymmetric lacing

28, 28.5, 29.5, 30, 31, 31.5, 32, 33, 33.5, 34, 35, 35.5, 36, 36.5, 37.5, 38, 38.5

667 white/rhodamine red/blue, **668** bright red/orange/yellow, **670** black/white

TeamSport-iD.com



TEAMS
www.teams.com

671



673



674



NEW
07/2025

5552 - OPURA ELITE FG/AG

Made in Europe | Stud shoe for adults | Suitable for natural and artificial grass | Optimum fit thanks to European lasts | Production with modern direct injection technology | Synthetic leather upper material for optimum feel for the ball | Knitted tongue construction with symmetrical lacing

36.5, 37.5, 38, 38.5, 39, 40, 40.5, 41, 42, 42.5, 43, 44, 44.5, 45, 45.5, 46, 47, 47.5, 48, 48.5

671 white/smokey grey, **673** white/orange, **674** black/smokey grey

OPURA



KIDS
FOOTBALL BOOTS



NEW
07/2025

5553 - OPURA TEAM FG/AG

Made in Europe | Stud shoe for adults | Suitable for natural and artificial grass | Optimum fit thanks to European lasts | Production with modern direct injection technology | Synthetic leather upper material for optimum feel for the ball | Classic tongue construction with symmetrical lacing

39, 40, 40.5, 41, 42, 42.5, 43, 44, 44.5, 45, 45.5, 46, 47, 47.5, 48, 48.5

670 black/white, **673** white/orange, **675** white/black

NEW
07/2025

5555 - OPURA ACADEMY FG/AG

Made in Europe | Stud shoe for kids | Suitable for natural and artificial grass | Optimum fit thanks to European lasts | Production with modern direct injection technology | Synthetic leather upper material for optimum feel for the ball | Classic tongue construction with symmetrical lacing

28, 28.5, 29.5, 30, 31, 31.5, 32, 33, 33.5, 34, 35, 35.5, 36, 36.5, 37.5, 38, 38.5

670 black/white, **673** white/orange

TeamSport-iD
www.TeamSport-iD.com

000



NEW
02/2025

5825 - SNEAKER URBAN CTW

Fast-drying material through Fast-Dry
Lining technology

36, 37, 38, 39, 40,
41, 42, 43, 44, 45, 46, 47

000 white





5910 - SNEAKER TEAM MESH

Optimal energy recovery through ShockAbsorb EVA midsole |
Breathable AirFlow mesh | Fast-drying material through Fast-Dry
Lining technology | While stocks last

36, 37, 38, 39, 40,
41, 42, 43, 44, 45, 46, 47

004 white/red, **005** white/royal, **728** white, **729** jet black

5911 - SNEAKER PERFORMANCE JUNIOR

Optimal energy recovery through ShockAbsorb EVA midsole |
Breathable AirFlow mesh | Fast-drying material trough Fast-Dry
Lining technology | Width measurement system for children's
shoes for a perfect fit | While stocks last

28, 29, 30, 31, 32, 33, 34, 35,
36, 37, 38, 39, 40

004 white/red, **005** white/royal, **728** white, **729** jet black



5912 - SNEAKER PREMIUM KNIT

Optimal energy recovery through ShockAbsorb
 EVA midsole | Breathable AirFlow mesh | Optimal
 cushioning through antimicrobial Ortholite insoles |
 While stocks last

36, 37, 38, 39, 40,
 41, 42, 43, 44, 45, 46, 47

723 charcoal, **724** ultimate grey, **906** seablue/dark blue

5619 - RUNNING SHOE PREMIUM RUN II

Fast-drying material through Fast-Dry Lining technology |
 Breathable mesh inserts | ShockAbsorb EVA midsole with
 optimal cushioning characteristics | Outsole with optimal
 traction | Breathable, cushioning and dimensionally
 stable insoles | Insole is washable

36, 37, 38, 39, 40,
 41, 42, 43, 44, 45, 46, 47

000 white, **802** black/white, **931** seablue/white



TeamSport-iD
www.TeamSport-iD.com



NEW 5620 - RUNNING SHOE RIVERFLOW MAX

02/2025

Fast-drying material through Fast-Dry Lining technology | Breathable mesh inserts | ShockAbsorb EVA midsole with optimal cushioning characteristics | Outsole with optimal traction | Breathable, cushioning and dimensionally stable insoles | Insole is washable

36, 37, 38, 39, 40,
41, 42, 43, 44, 45, 46, 47

799 soft grey/anthra light/lime



5701 - JAKOLETTE JAKO

Shower sandal with preformed footbed |
Quick-drying upper material | Non-slip sole

28, 29, 30, 31, 32, 33, 34, 35,
36, 37, 38, 39, 40,
41, 42, 43, 44, 45, 46, 47

726 fiery red, **728** white, **729** jet black, **733** dk navy

5702 - JAKOLETTE RIVER

Shower sandal with preformed footbed |
Quick-drying upper material | Non-slip sole

36, 37, 38, 39, 40, 41, 42, 43,
44, 45, 46, 47

Fb. 710:

36, 37, 38, 39, 40, 41, 42, 43

710 pink, **729** jet black, **730** vapor grey, **733** dk navy



733

CUSTOMIZ-
ABLE



®



726



729



5700 - JAKOLETTE LOCKER

Shower sandal with preformed footbed |
Quick-drying upper material | Non-slip sole |
With velcro fastener | Perfect for customization

36, 37, 38, 39, 40,
41, 42, 43, 44, 45, 46, 47

726 fiery red, **729** jet black, **733** dk navy



HARDWARE & ACCESSORIES



3911 - TRAINING SOCKS

39 % cotton, 39 % elastane,
20 % polypropylene, 2 % polyamide

Comfort cuff | Anatomical formed
foot | Cotton padded footbed

3 (35-38), 4 (39-42), 5 (43-46)

00 white, **01** sport red, **04** sport royal, **08** black,
09 navy, **40** stone grey, **207** dark green, **335** yellow



3912 - TRAINING SOCKS SHORT

43 % cotton, 30 % elastane,
25 % polypropylene, 2 % polyamide

Comfort cuff | Anatomical formed
foot | Cotton padded footbed

3 (35-38), 4 (39-42), 5 (43-46)

00 white, **01** sport red, **04** sport royal,
08 black, **09** navy, **40** stone grey



3949 - RUNNING SOCKS COMFORT

74 % polyamide, 22 % polypropylene, 4 % elastane
Short comfort cuff | Midfoot compression

3 (35-38), 4 (39-42), 5 (43-46)

000 white, **800** black

TeamSport-iD
www.TeamSport-iD.com



3950 - GRIP SOCKS COMFORT

70 % cotton, 26 % polyamide, 4 % elastane
Anti-slip nubs | Comfort cuff |
Midfoot compression | Cushioned
heel and toe area

4 (39-42), 5 (43-46)

000 white, **100** red, **400** royal, **800** black



3951 - COMPRESSION SOCKS COMFORT

Microlon® polyamide, 93 % polyamide, 7 % elastane
Accelerates muscle recovery |
Increases athletic performance |
Offers highest comfort and well-being

4 (39-42), 5 (43-46)

000 white, **800** black



3941 - SOCK LINERS BASIC 3-PACK

67 % cotton, 19 % polyester,
13 % polyamide, 1 % elastane
Flat toe seam | Short comfort cuff

3 (35-38), 4 (39-42), 5 (43-46), 6 (47-50)

00 white, 08 black



3938 - SOCK LINERS 3-PACK

68 % cotton, 29 % polyamide, 3 % elastane
Short comfort cuff | Open mesh structure

3 (35-38), 4 (39-42), 5 (43-46), 6 (47-50)

00 white, 08 black



3942 - LEISURE SOCKS SHORT 3-PACK

66 % cotton, 21 % polyester,
11 % polyamide, 2 % elastane
Flat toe seam | Short comfort cuff

3 (35-38), 4 (39-42), 5 (43-46), 6 (47-50)

00 white, 08 black



3943 - SPORTS SOCKS SHORT 3-PACK

75 % cotton, 24 % polyester, 1 % elastane
Flat toe seam | Comfort cuff |
Cushioned heel and toe area

3 (35-38), 4 (39-42), 5 (43-46), 6 (47-50)

00 white, 08 black



3944 - SPORTS SOCKS LONG 3-PACK

75 % cotton, 24 % polyester, 1 % elastane
Flat toe seam | Comfort cuff |
Cushioned heel and toe area

3 (35-38), 4 (39-42), 5 (43-46), 6 (47-50)

00 white, 08 black



3937 - LEISURE SOCKS 3-PACK

71 % cotton, 22 % polyester,
4 % polyamide, 3 % elastane
Comfort cuff | Light midfoot compression

3 (35-38), 4 (39-42), 5 (43-46), 6 (47-50)

08 black, 21 anthracite

TEAMSPORT-ID
www.TeamSport-ID.com



1280 - CAP CLUB

50 % cotton (recycled), 50 % cotton
 Mesh insert: 100 % polyester (recycled)
 Size adjustable clip closure

2 Senior

001 white/black, **142** chili red/black, **800** black



1281 - CAP FUNCTION

100 % polyester (recycled)
 Size adjustable with velcro fastener

2 Senior

001 white/black, **800** black, **917** seablu/black



1282 - CAP BASIC

100 % polyester (recycled)
 Size adjustable clip closure

2 Senior

000 white, **141** chili red, **800** black, **900** seablu

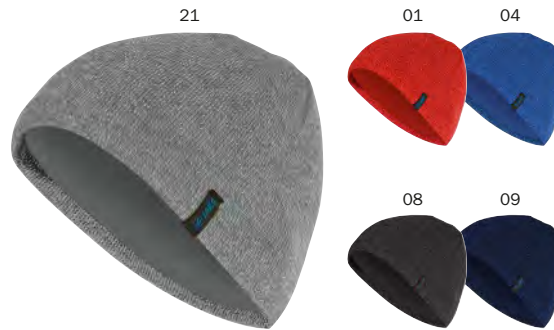


1224 - FLEECE CAP

Micro fleece, 100 % polyester
Soft outer layer structure for great wearing comfort | Quick-drying and breathable

1 Junior, 2 Senior

01 red, 03 citro, 04 royal, 08 black, 09 seablue,
22 soft green, 40 stone grey



1223 - KNITTED CAP

Knit, 50 % polyester, 50 % polyacryl
Melange effect

1 Junior, 2 Senior

01 red melange, 04 royal melange, 08 black melange,
09 seablue melange, 21 grey melange



1229 - CAP FUNCTION RUN

Inside brushed, 87 % polyester, 13 % elastane
Reflective prints | Soft outer layer structure for great wearing comfort | Quick-drying and breathable

1 Junior, 2 Senior

08 black



1292 - NECK WARMER

Micro fleece, 100 % polyester
Soft outer layer structure for great wearing comfort | Quick-drying and breathable

0 Unisex

01 red, 04 royal, 08 black, 21 anthracite,
22 soft green, 40 stone grey



1293 - NECK WARMER WITH CAP

Micro fleece, 100 % polyester
Integrated hood in collar | Soft outer layer structure for great wearing comfort | Quick-drying and breathable

1 Junior, 2 Senior

08 black



1294 - NECK WARMER FUNCTION

Inside brushed, 87 % polyester, 13 % elastane
Reflective prints | Soft outer layer structure for great wearing comfort | Quick-drying and breathable

0 Unisex

08 black



1299 - HEADBAND FUNCTION

Inside brushed, 87 % polyester, 13 % elastane
 Reflective prints | Soft outer layer structure for great wearing comfort | Quick-drying and breathable

0 Unisex

08 black



1231 - PLAYER GLOVE FUNCTION

Inside brushed, 88 % polyester, 12 % elastane
 Non-slip coating on fingertips

4, 5, 6, 7, 8, 9, 10, 11

01 red, 04 royal, 08 black



1230 - FLEECE GLOVE

Micro fleece, 100 % polyester
 Elastic waistband

4, 5, 6, 7, 8, 9, 10, 11

08 black



1232 - PLAYER GLOVE FLEECE

Micro fleece, 100 % polyester
 Non-slip coating on fingertips |
 Velcro fastener on back

4, 5, 6, 7, 8, 9, 10, 11

01 red, 04 royal, 08 black, 09 seablue



1234 - PLAYER GLOVE FUNCTION WARM

Inside brushed, 92 % polyester, 8 % elastane
 Fingertips with material inserts for smart phone usage | Palms with a silicone anti-slip coating for maximum grip

4, 5, 6, 7, 8, 9, 10, 11

08 black



000 01 02 19 40 45



19 Back view



19

2616 - MARKING VEST CLASSIC 2.0

Polyester mesh, 100 % polyester

- 0 Bambini (Body height up to 135 cm),
- 1 Junior (Body height up to 165 cm),
- 2 Senior (Body height over 165 cm)

000 white, **01** sport red, **02** neon green, **03** neon yellow,
19 neon orange, **40** stone grey, **45** sky blue

2619 - MARKING VEST STRIPE

Polyester mesh, 100 % polyester

Chest insert for ideal customization possibilities

- 1 Junior (Body height up to 165 cm),
- 2 Senior (Body height over 165 cm)

03 neon yellow, **19** neon orange

2618 - MARKING VEST REVERSE

Polyester mesh, 100 % polyester

Reversible

- 0 Bambini (Body height up to 135 cm),
- 1 Junior (Body height up to 165 cm),
- 2 Senior (Body height over 165 cm)

03 neon yellow/royal, **19** neon orange/stone grey



2177 - DRINK BOTTLE PREMIUM

Capacity of 750 ml | Diameter: 7 cm, height: 20 cm | Not suitable for carbonated drinks

0 750 ml

00 transparent/black, **01** red, **08** black, **89** JAKO blue, **99** seablue



2157 - DRINK BOTTLE JAKO

Capacity of 750 ml | JAKO logo on both sides | Diameter: 7 cm, height: 23 cm | Not suitable for carbonated drinks

0 750 ml

100 red, **200** sport green, **300** citro, **440** JAKO blue, **800** black



2186 - BOTTLE HOLDER

Foldable | Holds up to 8 bottles | JAKO logo on both sides | Without content

0 for 8 bottles

800 black



2820 - CAPTAIN'S BAND CLASSICO

70 % polyester, 30 % elastane
Arm strap | Velcro closure

1 Junior 28 x 7.5 cm (LxW),
2 Senior 35 x 9.0 cm (LxW)

000 white, **110** sport red, **300** citro, **410** sport royal

2823 - CAPTAIN'S BAND

70 % polyester, 30 % elastane
Arm strap | Velcro closure

1 Junior 28 x 7.5 cm (LxW),
2 Senior 35 x 9.0 cm (LxW)

763 rainbow, **764** black/red/yellow

2821 - CAPTAIN'S BAND TEAM

60 % polyester, 40 % elastane
Anti-slip inside | Without velcro |
Ideal customization possibilities

1 Junior 22 x 7.5 cm (LxW),
2 Senior 27 x 9.0 cm (LxW)

000 white, **110** sport red, **220** soft green,
320 neon yellow, **370** flame, **440** JAKO blue

2822 - BLACK BAND

70 % polyester, 30 % elastane
Arm strap | Velcro closure

2 Senior 35 x 9.0 cm (LxW)

800 black



TeamSport-ID
www.TeamSport-ID.com

RUNNING & FITNESS



NEW
03|2025

6176 - T-SHIRT LIGHT FLOW

Polyester micro mesh, 100 % polyester (recycled)



JAKO logo and dots with integrated pattern

128, 140, 152, 164
S, M, L, XL, XXL, 3XL



6176D - WOMEN SIZES

S, M, L, XL

000 white, **100** red, **251** mint, **365** coral,
400 royal, **430** sky blue, **800** black

NEW
03|2025

6076 - TANK TOP LIGHT FLOW

Polyester micro mesh, 100 % polyester (recycled)



JAKO logo and dots with integrated pattern

128, 140, 152, 164
S, M, L, XL, XXL



6076D - WOMEN SIZES

S, M, L

000 white, **100** red, **251** mint, **365** coral,
400 royal, **430** sky blue, **800** black

TEAMSPOORT-ID
www.Teamsport-ID.com



NEW
03/2025

8676 - ZIP TOP LIGHT FLOW

Polyester stretch, 90 % polyester (recycled), 10 % elastane



Made of highly elastic polyester elastane mix | JAKO logo and dots with integrated pattern



128, 140, 152, 164
S, M, L, XL, XXL, 3XL

8676D - WOMEN SIZES

S, M, L, XL

000 white, **100** red, **251** mint, **365** coral,
400 royal, **430** sky blue, **800** black



NEW
03|2025

9876 - LIGHTWEIGHT JACKET FLOW

Polyester ribstop, 100 % polyester (recycled)



Wind and water-repellent outer material | Hood with drawcord and stoppers | Elastic cuffs | Side pockets with zip | JAKO logo and dots with integrated pattern



128, 140, 152, 164
S, M, L, XL, XXL, 3XL

9876D - WOMEN SIZES

S, M, L, XL

000 white, **100** red, **251** mint, **365** coral,
400 royal, **430** sky blue, **800** black



00 01 03 04 08 19 25 51 89



00 01 03 04 08 19 25 51 89



6175 - T-SHIRT RUN 2.0

Polyester micro mesh, 100 % polyester (recycled)
Flatlock seams | Material mix | Back made of micro mesh



128, 140, 152, 164
S, M, L, XL, XXL, 3XL
34, 36, 38, 40, 42, 44, 46, 48

00 white, 01 sport red, 03 neon yellow, 04 royal, 08 black,
19 neon orange, 25 neon green, 40 stone grey, 51 pink, 89 JAKO blue



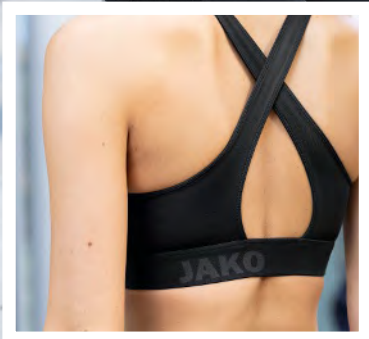
6475 - LONGSLEEVE RUN 2.0

Polyester micro mesh, 100 % polyester (recycled)
Flatlock seams | Material mix | Back made of micro mesh



128, 140, 152, 164
S, M, L, XL, XXL, 3XL
34, 36, 38, 40, 42, 44, 46, 48

00 white, 01 sport red, 03 neon yellow, 04 royal, 08 black,
19 neon orange, 25 neon green, 40 stone grey, 51 pink, 89 JAKO blue



800



237



6676 - BRA POWER

Polyester stretch jersey
82 % polyester (recycled), 18 % elastane



Elastic waistband with JAKO branding |
Flatlock seams

34, 36, 38, 40, 42, 44

237 mint green, 800 black



40

Back view
men



Back view
women



00 01 03 04 08 19 25 51 89



6075 - TANK TOP RUN 2.0

Polyester micro mesh, 100 % polyester (recycled)

Neckline and armhole with elastic binding | Flatlock
seams | Material mix | Back made of micro mesh



128, 140, 152, 164

S, M, L, XL, XXL

34, 36, 38, 40, 42, 44

00 white, 01 sport red, 03 neon yellow, 04 royal, 08 black,
19 neon orange, 25 neon green, 40 stone grey, 51 pink, 89 JAKO blue



6276 - 2-IN-1 SHORTS POWER

Outer shorts: 100 % polyester (recycled)
Inner shorts: 83 % polyester (recycled), 17 % elastane



Side slip pocket on the right | Side pockets |
Lateral insert in honeycomb structure |
Elastic waistband with JAKO branding

S, M, L, XL, XXL
34, 36, 38, 40, 42, 44

237 mint green, 522 light grey, 800 black, 900 seablue



6278 - RUNNING SHORTS POWER

Stretch micro twill, 100 % polyester (recycled)



Side pockets with zip | Lateral insert in
honeycomb structure | Elastic waistband
with JAKO branding

S, M, L, XL, XXL, 3XL
34, 36, 38, 40, 42, 44

237 mint green, 522 light grey, 800 black, 900 seablue



900

Back view



00

09



4476 - INDOOR TIGHT POWER

Polyester stretch jersey
82 % polyester (recycled), 18 % elastane
Comfortable, extra wide waistband



128, 140, 152, 164
34, 36, 38, 40, 42, 44

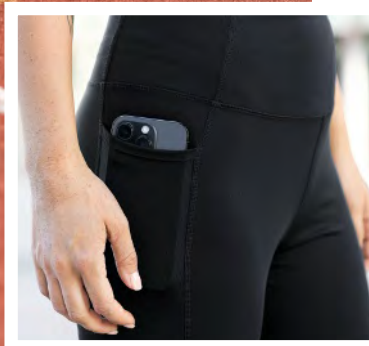
800 black, **900** seablue

6202 - SKIRT BASIC

Polyester stretch jersey
88 % polyester, 12 % elastane
With inner slip | Elastic waistband

3XS, XXS, XS, S, M, L, XL, XXL

00 white, **08** black, **09** seablue



8576 - RUNNING SHORT TIGHT POWER

Polyester stretch jersey
82 % polyester (recycled), 18 % elastane

Side slip pocket | Elastic waistband
with JAKO branding

128, 140, 152, 164
S, M, L, XL, XXL

800 black, 900 seablue



8576D - WOMEN SIZES

Side slip pocket | Comfortable, extra
wide waistband with key pocket

34, 36, 38, 40, 42, 44

237 mint green, 800 black, 900 seablue



6776 - CAPRI TIGHT POWER

Polyester stretch jersey
82 % polyester (recycled), 18 % elastane

Side slip pocket | Lateral insert in honeycomb
structure | Elastic waistband with JAKO branding

128, 140, 152, 164
S, M, L, XL, XXL

800 black, 900 seablue



6776D - WOMEN SIZES

Side slip pocket | Lateral insert in honeycomb
structure | Comfortable, extra wide waistband
with key pocket

34, 36, 38, 40, 42, 44

237 mint green, 800 black, 900 seablue



237 522



800 900



teamSport-iD.com



8376 - TIGHT POWER

Polyester stretch jersey

82 % polyester (recycled), 18 % elastane

Side slip pocket | Lateral insert in honeycomb structure | Elastic waistband with JAKO branding

128, 140, 152, 164

S, M, L, XL, XXL

522 light grey, 800 black, 802 black/white, 900 seablue



8376D - WOMEN SIZES

Side slip pocket | Lateral insert in honeycomb structure | Comfortable, extra wide waistband with key pocket

34, 36, 38, 40, 42, 44

237 mint green, 522 light grey, 800 black, 802 black/white, 900 seablue



8378 - WINTER TIGHT POWER

Polyester stretch jersey brush

92 % polyester (recycled), 8 % elastane

Side slip pocket | Lateral insert in honeycomb structure | Soft inside | Elastic waistband with JAKO branding

128, 140, 152, 164

S, M, L, XL, XXL

800 black



8378D - WOMEN SIZES

Side slip pocket | Lateral insert in honeycomb structure | Soft inside | Comfortable, extra wide waistband with key pocket

34, 36, 38, 40, 42, 44

800 black



BAGS



103

Side view



Back view



103

Side view



Back view



403



444



800



839



403



444



800



839

2024 - SPORTS BAG ICONIC WITH BASE COMPARTMENT

Polyester 600 D, 100 % polyester

Spacious main compartment with allround two-way zip | Base compartment height 12 cm | Zip compartment on left side | Deep wet compartment with zip on right side | Small inside pocket with zip | Adjustable shoulder strap

S Bambini 45 x 24 x 37 cm (LxWxH) Approx. 30 litres
 M Junior 55 x 27 x 41 cm (LxWxH) Approx. 60 litres
 L Senior 65 x 30 x 44 cm (LxWxH) Approx. 85 litres

103 red/wine red, **403** royal/seablue, **444** JAKO blue/seablue/neon yellow, **800** black, **839** soft grey/antra light

1924 - SPORTS BAG ICONIC

Polyester 600 D, 100 % polyester

Spacious main compartment with allround two-way zip | Zip compartment on left side | Deep wet compartment with zip on right side | Small inside pocket with zip | Adjustable shoulder strap

S Bambini 45 x 24 x 26 cm (LxWxH) Approx. 28 litres
 M Junior 55 x 27 x 29 cm (LxWxH) Approx. 43 litres
 L Senior 65 x 30 x 32 cm (LxWxH) Approx. 62 litres

103 red/wine red, **403** royal/seablue, **444** JAKO blue/seablue/neon yellow, **800** black, **839** soft grey/antra light



2050 - SPORTS BAG CLASSICO WITH BASE COMPARTMENT

Polyester 600 D, 100 % polyester

Spacious main compartment with allround two-way zip | Base compartment (height size 1: 10 cm, size 2, 3: 14 cm) | Mesh compartment on left side | Deep wet compartment with zip on right side | Small inner pocket with zip in main compartment | Adjustable, removable shoulder strap

| | | |
|-----------|-------------------------|-------------------|
| 1 Bambini | 38 x 21 x 32 cm (LxWxH) | Approx. 24 litres |
| 2 Junior | 50 x 30 x 38 cm (LxWxH) | Approx. 55 litres |
| 3 Senior | 60 x 35 x 43 cm (LxWxH) | Approx. 88 litres |

01 red, 04 royal, 06 sport green, 08 black, 09 seablue

1950 - SPORTS BAG CLASSICO

Polyester 600 D, 100 % polyester

Spacious main compartment with allround two-way zip | Mesh compartment on left side | Deep wet compartment with zip on right side | Small inner pocket with zip in main compartment | Adjustable, removable shoulder strap

| | | |
|-----------|-------------------------|-------------------|
| 1 Bambini | 35 x 21 x 28 cm (LxWxH) | Approx. 19 litres |
| 2 Junior | 45 x 30 x 30 cm (LxWxH) | Approx. 40 litres |
| 3 Senior | 55 x 35 x 32 cm (LxWxH) | Approx. 60 litres |

01 red, 04 royal, 06 sport green, 08 black, 09 seablue



TEAMSPORT-ID
www.teamSport-ID.com

1989 - BACKPACK BAG JAKO

Polyester 600 D, 100 % polyester

The straps of the backpack can be stowed in the bottom | Spacious main compartment with allround two-way zip | Zip compartment on left side | Deep wet compartment with zip on right side | Small inner pocket with zip in main compartment | Size adjustable, removeable shoulder strap

M Junior 50 x 27 x 28 cm (LxWxH) Approx. 25 litres
L Senior 60 x 34 x 30 cm (LxWxH) Approx. 35 litres

04 royal, 08 black, 09 seablue, 11 chili red

1921 - SPORTS BAG CHALLENGE

Polyester 600 D, 100 % polyester

Spacious main compartment with allround two-way zip | Zip compartment on left side | Deep wet compartment with zip on right side | Key pocket with zip in main compartment | Size adjustable, removeable shoulder strap

M Junior 60 x 30 x 31 cm (LxWxH) Approx. 55 litres
L Senior 71 x 32 x 36 cm (LxWxH) Approx. 82 litres

500 black melange, 510 seablue melange,
520 light grey melange, 530 stone grey melange



2088 - TROLLEY JAKO

Polyester 600 D, 100 % polyester

Large, spacious main compartment with two-way zip | Retractable telescope handle | Key pocket with zip in main compartment | Pocket with zip on side | Smooth-running rubber wheels

M Junior Approx. 60 litres

L Senior Approx. 95 litres

08 black

2028 - TEAM-KIT BAG JAKO

Polyester 600 D, 100 % polyester

Large, spacious main compartment with two-way zip | Key pocket with zip in main compartment | Additional side compartment on right outside | Removable and adjustable shoulder strap

Approx. 90 litres

08 black



1814 - BACKPACK ICONIC

Polyester 600 D, 100 % polyester
 Spacious main compartment with allround two-way zip | Padded, quilted back area and padded straps | Separate, 10 cm high base compartment | Separate front compartment with zip | Small inside pocket with zip

Approx. 32 litres

103 red/wine red, **163** pink/black/neon yellow, **211** neon green/black, **403** royal/seablue, **444** JAKO blue/seablue/neon yellow, **800** black, **839** soft grey/anthra light



1816 - BACKPACK TLS

Polyester 600 D, 100 % polyester
 Two large main compartments with two-way zip | Padded, quilted back area and padded straps | Separate, 10 cm high base compartment | Small inner pocket with zip

Approx. 32 litres

01 red, **04** royal, **06** sport green, **08** black



1811 - BACKPACK TROPICANA

Polyester 600 D, 100 % polyester
 Retro design inspired by the JAKO classic Tropicana | Two main compartments | 2-way zip | Padded shoulder straps | Mesh side slit pockets

Approx. 32 litres

620 retro, **801** black/anthracite



1821 - BACKPACK CHALLENGE

Polyester 600 D, 100 % polyester
 Spacious main compartment with allround two-way zip | Separate, 10 cm high base compartment | Padded shoulder straps | Small inside pocket with zip

Approx. 30 litres

500 black melange, **510** seablue melange, **520** light grey melange, **530** stone grey melange

TEAMSPORT-ID
 www.TeamSport-ID.com



01 04 06 09



100 400 434 459



04 09 11

1850 - BACKPACK CLASSICO

Polyester 600 D, 100 % polyester

Large main compartment with separate inner pocket | Two-way zip | Separate zip pocket on front with integrated organizer | Mesh side slit pockets

Approx. 18 litres

01 red, 04 royal, 06 sport green, 08 black, 09 seablue

NEW 1705 - GYM BAG TEAM 2.0

04/2025

100 % polyester

Ideal for school and casual sport | Integrated cords to wear over back or shoulders | Can also be used as shoe bag

34 x 44 cm (LxH)

100 red, 400 royal, 434 sky blue/navy/coral, 459 light blue/sky blue/blue, 800 black

1789 - GYM BAG JAKO

Polyester 600 D, 75 % polyester, 25 % nylon

Small zip pocket on outside | Integrated cords to wear over back or shoulder

47 x 37.5 cm (LxW)

04 royal, 08 black, 09 seablue, 11 chili red



1721 - PERSONAL BAG CHALLENGE

Polyester 600 D, 100 % polyester

Main compartment with two-way zip | Two inner pockets | Separate outer compartment with zip | With strap for hanging when open

25 x 10 x 21 cm (LxWxH)

500 black melange, **510** seablue melange, **520** light grey melange, **530** stone grey melange



1750 - PERSONAL BAG CLASSICO

Polyester 600 D, 100 % polyester

With practical two-way zip | Front pocket with zip | Strap for carrying or hanging | Two small inner compartments and two elastic straps for individual arrangement of items

25 x 12.5 x 18.5 cm (LxWxH)

01 red, **04** royal, **08** black, **09** seablue



1689 - PERSONAL BAG JAKO

Polyester 600 D, 100 % polyester

Inner compartment with zip | Strap for carrying or hanging | Additional mesh pocket

25 x 12.5 x 18.5 cm (LxWxH)

04 royal, **08** black, **09** seablue, **11** chili red



1788 - SHOE BAG JAKO

Polyester 600 D, 100 % polyester

Main compartment with two-way zip | For 1-2 pairs of shoes | Strap for carrying or hanging

20 x 15 x 37 cm (LxWxH)

08 black



1589 - WAIST BAG JAKO

Polyester 600 D, 100 % polyester

Main compartment with two-way zip | Separate outer compartment with zip

23 x 8.5 x 13 cm (LxWxH)

800 black

TeamSport-ID
www.TeamSport.com

SIZE CHART

At our qualified local sports retailers you can convince yourself of the cuts and sizes.

For the selection of the perfect size, it should be taken into account that the articles of our CORPORATE TEAMWEAR are cut a little wider than our team teamsport articles.

UNISEX | MEN

| Unisex | S | | M | | L | XL | | XXL | 3XL | | 4XL | | 5XL | |
|-------------|----|----|----|----|-----|-----|----|-----|-----|----|-----|----|-----|---|
| Confection | 44 | 46 | 48 | 50 | 52 | 54 | 56 | 58 | 60 | 62 | 64 | 66 | | |
| Short sizes | - | | 24 | | 25 | 26 | | 27 | 28 | | 29 | | 30 | |
| Long sizes | 94 | | 98 | | 102 | 106 | | 110 | - | - | - | - | - | - |

WOMEN

| Unisex | XS | S | M | M-L | L | XL | XL-XXL | XXL | |
|-------------|----|----|----|-----|----|----|--------|-----|--|
| Confection | 34 | 36 | 38 | 40 | 42 | 44 | 46 | 48 | |
| Women sizes | S | | M | | | L | | XL | |
| Short sizes | - | 18 | 19 | 20 | 21 | 22 | 23 | - | |
| Long sizes | - | - | 76 | 80 | 84 | 88 | - | - | |

KIDS

| Unisex | - | | | 3XS | | | XXS | | | XS | |
|------------|-----|-----|-----|-----|-----|-----|------|-------|-------|-------|-------|
| Confection | 104 | 110 | 116 | 122 | 128 | 134 | 140 | 146 | 152 | 158 | 164 |
| Age | 3-4 | 4-5 | 5-6 | 6-7 | 7-8 | 8-9 | 9-10 | 10-11 | 11-12 | 12-13 | 13-14 |

GLOVES

| Size | 3 | 4 | 5 | 6 | 6,5 | 7 | 7,5 | 8 | 8,5 | 9 | 9,5 | 10 | 10,5 | 11 | 11,5 | 12 |
|-----------------|---|-----|-----|-----|-----|-----|-----|-----|-----|-----|-----|-----|------|------|------|----|
| Hand width (cm) | 5 | 5,6 | 6,3 | 6,9 | 7,4 | 7,9 | 8,2 | 8,5 | 8,9 | 9,2 | 9,5 | 9,8 | 10,1 | 10,4 | 10,7 | 11 |

More detailed information about our sizes you can find online. **Scan the QR code now!**



Matthis is 189 cm tall and wears size L

Levin is 134 cm tall and wears size 128

FUNCTION

On the sports field, in the gym or on long working days: the functional properties of our textiles help you look good in every situation. Pay attention to the corresponding icons KEEP DRY and STOP WATER on the JAKO products.

TEXTILE CARE

Textile friendly washing and drying is an essential part of textile care. In order to enjoy your textiles for a long time, you should pay attention to the care symbols on the label in the clothing. With tips and tricks from clevercare.info you will learn sustainable textile care.

CUSTOMIZATION

Club badge, sponsor logos or player numbers: with a customization you can make your equipment unmistakable. That is why numerous JAKO team sport articles offer large free space for individual customization. Talk to your local sports retailer.

NOTE: When finishing with screen printing, we recommend the use of a migration blocker to achieve the best possible result.



Microfine fibres transport moisture directly to the surface of the fabric. Thus, the material dries very quickly, protects against cooling and keeps you a comfortable body feeling during sports.



Waterproof functional materials and welded main seams also provide reliable protection against moisture. The high water vapour permeability guarantees a comfortable body climate.

